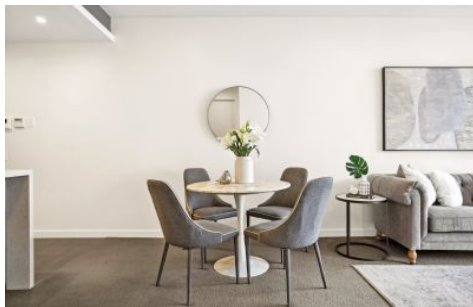


CITY LIVING



2307/7 Scotsman Street Forest Lodge NSW

2 2 1

Mirvac's award-winning 'Harold Park Development' is the setting for this contemporary two-bedroom apartment, offering a stylish home of premium quality and designed with a focus on effortless living and entertaining.

KEY FEATURES

The layout - Wonderfully spacious and brimming with natural light, it reveals a clever layout with a nice separation from the living spaces and bedrooms. The bedrooms are well-sized, while open plan living and dining areas flow to a sun bathed undercover balcony with a lovely leafy outlook.

The features - The gourmet stone kitchen is equipped with

[For full version visit the website](https://www.cityliving.com.au)

Type : Apartment
Price : Contact Agent
Building Size : 83 sqm
View : <https://www.cityliving.com.au/sale/nsw/inner-west/forest-lodge/residential/apartment/8145769>

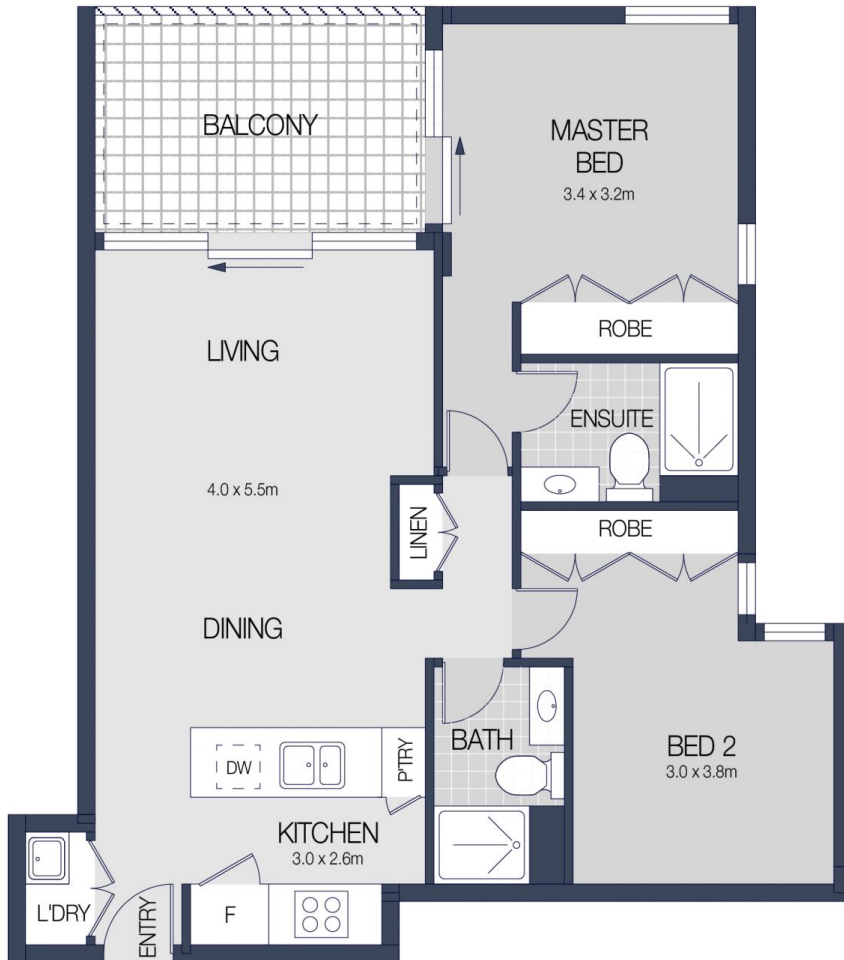


Tasman Fallshaw
02 8248 9104

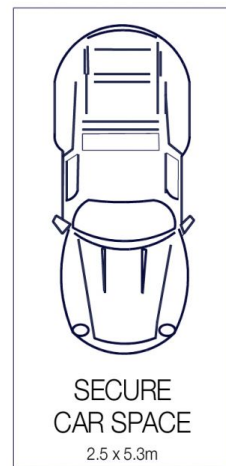
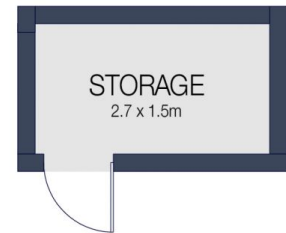


Anthony Kannis
02 8248 9109

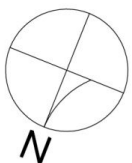
<https://www.cityliving.com.au>



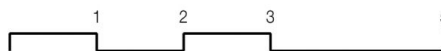
LEVEL THREE



BASEMENT TWO



2307/7 SCOTSMAN STREET, FOREST LODGE



Scale in metres. Indicative only. Dimensions are approximate.

All information contained herein is gathered from sources we believe to be reliable.

However we cannot guarantee it's accuracy and interested persons should rely on their own enquiries.