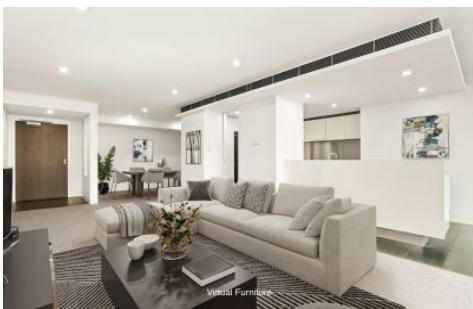


CITY LIVING



19 Hickson Road Walsh Bay NSW

2  2  1 

This generously sized two bedroom apartment in a prime location has been recently updated with new carpet and paint, enjoy easterly sunrise views overlooking the Sydney Harbour Bridge.

Building Size : 129 sqm
View : <https://www.cityliving.com.au/lease/nsw/sydney-city/walsh-bay/residential/unit/8108318>

KEY FEATURES

The Apartment - Two bedrooms with built-in wardrobes, two bathrooms (one ensuite with bathtub), separate lounge/dining areas, kitchen with gas cooking and stone benchtops, Miele appliances, fridge, and additional breakfast area. Large balcony with electronic louvres for privacy and climate control. Secure basement parking space.



Lewis Thompson
02 9299 0990

The Building - Pier 6/7 at 19 Hickson Road is a renowned Mirvac development, situated on the fringe of Sydney City,

