

# CITY LIVING



107/187 Liverpool Street Sydney NSW

2 🛏 2 🚿 1 🚗

Boasting a desirable northerly aspect and positioned directly opposite Hyde Park, this refreshed apartment delivers an incredible lifestyle sanctuary in the landmark "The Connaught". Offering inner-city living at its best, it is located within a stroll of the CBD and Oxford Street's attractions.

**Price** : \$ 1,725,000  
**Building Size** : 119 sqm  
**View** : <https://www.cityliving.com.au/sale/nsw/sydney-city/sydney/residential/apartment/8104887>

## KEY FEATURES

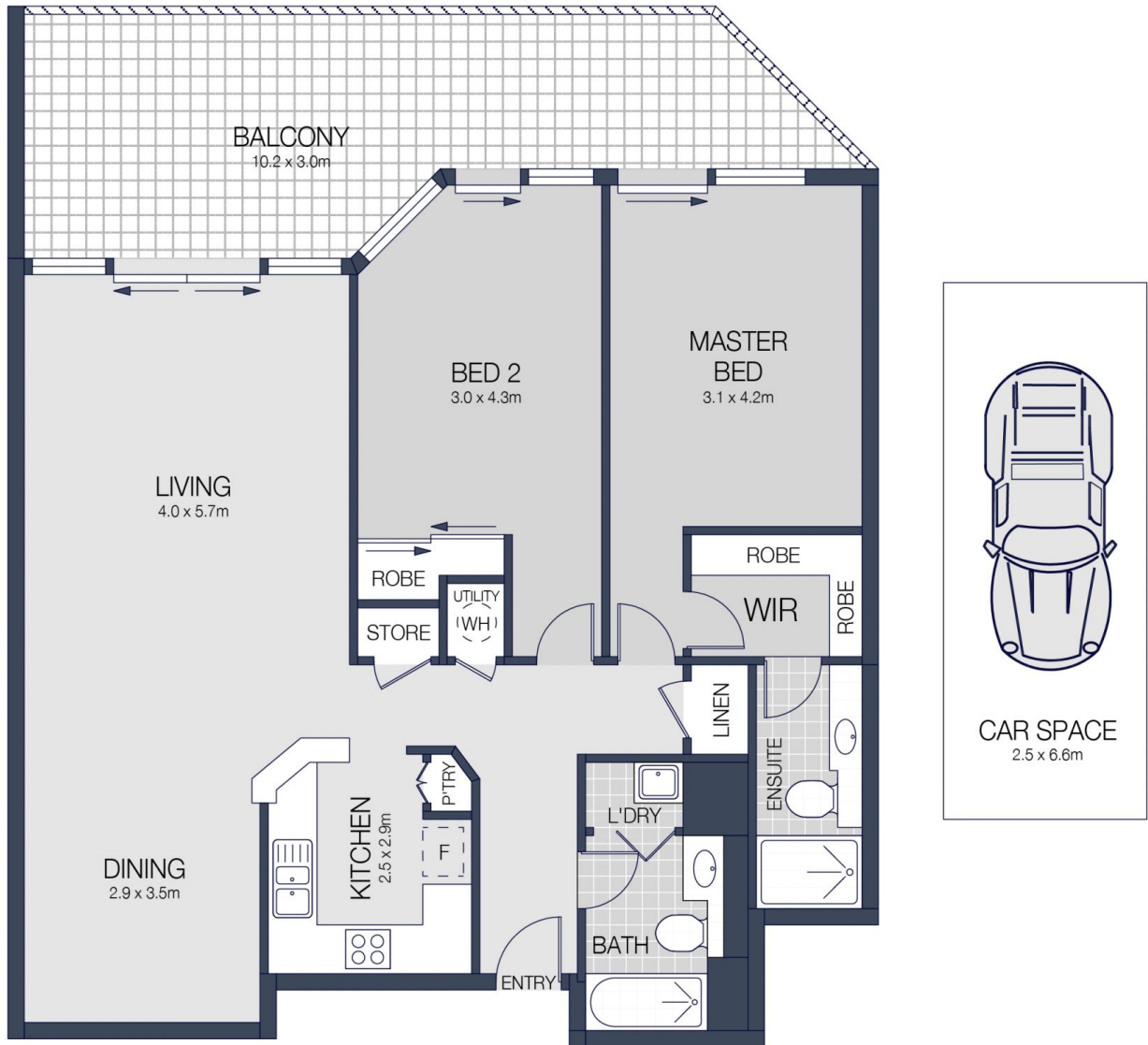
The layout - Generous open plan living and dining areas flowing to a north facing full-width sun soaked balcony ideal for entertaining. A renovated granite kitchen features a Bosch induction cooktop, a breakfast bar and dishwasher, while both the well-sized bedrooms enjoy access to the balcony and the main features a walk-in wardrobe and an ensuite.



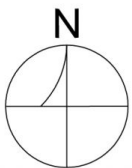
**Tasman Fallshaw**  
02 8248 9104



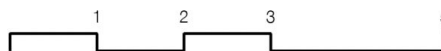
**Anthony Kannis**  
02 8248 9109



## LEVEL ONE



107/187 LIVERPOOL STREET, SYDNEY



Scale in metres. Indicative only. Dimensions are approximate.

All information contained herein is gathered from sources we believe to be reliable.

However we cannot guarantee it's accuracy and interested persons should rely on their own enquiries.