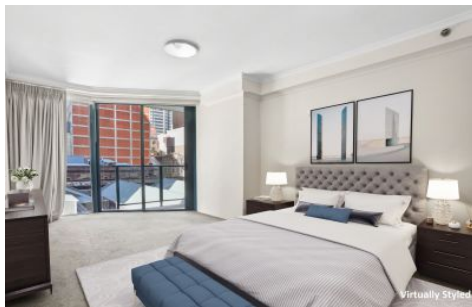


CITY LIVING



222 Sussex Street Sydney NSW

2  2  1 

A generously portioned, two-bedroom apartment in a very popular and highly reputable part of the CBD, amidst cafe's, restaurants and amenities. Walking distance to Darling Harbour, Barangaroo, the new Sydney Metro and the City Centre.

KEY FEATURES

The Apartment - This apartment features a lounge/dining space that flows from the open-plan kitchen and into the private balcony. The master suite is large enough to home a king size bed and study desk. Internal laundry, master bedroom with ensuite, second bathroom and secure basement parking space this property is a must see.

Type : Apartment
Price : \$1,150 pw
Land Size : 113 sqm
View : <https://www.cityliving.com.au/lease/nsw/sydney-city/sydney/residential/apartment/8102205>



Lewis Thompson
02 9299 0990

[For full version visit the website](https://www.cityliving.com.au)

<https://www.cityliving.com.au>