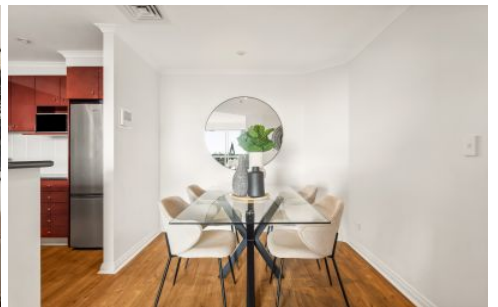


CITY LIVING



1607/50 Murray Street Pyrmont NSW

2 2 1

Dominated by spectacular far-reaching views towards the Anzac Bridge and stretching all the way to the Blue Mountains, this light filled executive apartment delivers resort-style city living at its best on the top residential floor of the highly acclaimed complex One Darling Harbour.

KEY FEATURES

The Layout - It has been cleverly designed to allow both the bedrooms and living area to receive the full effect of the panoramic view as well as enjoying access to the balcony. There is a granite kitchen with quality appliances as well as a modern bathroom and ensuite plus ducted air conditioning and double-glazed windows ensuring absolute peace while taking in those extraordinary sunsets.

[For full version visit the website](https://www.cityliving.com.au)

Type	: Apartment
Price	: \$ 1,500,000
Building Size	: 91 sqm
View	: https://www.cityliving.com.au/sale/nsw/sydney-city/pyrmont/residential/apartment/8087692

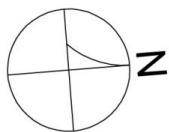
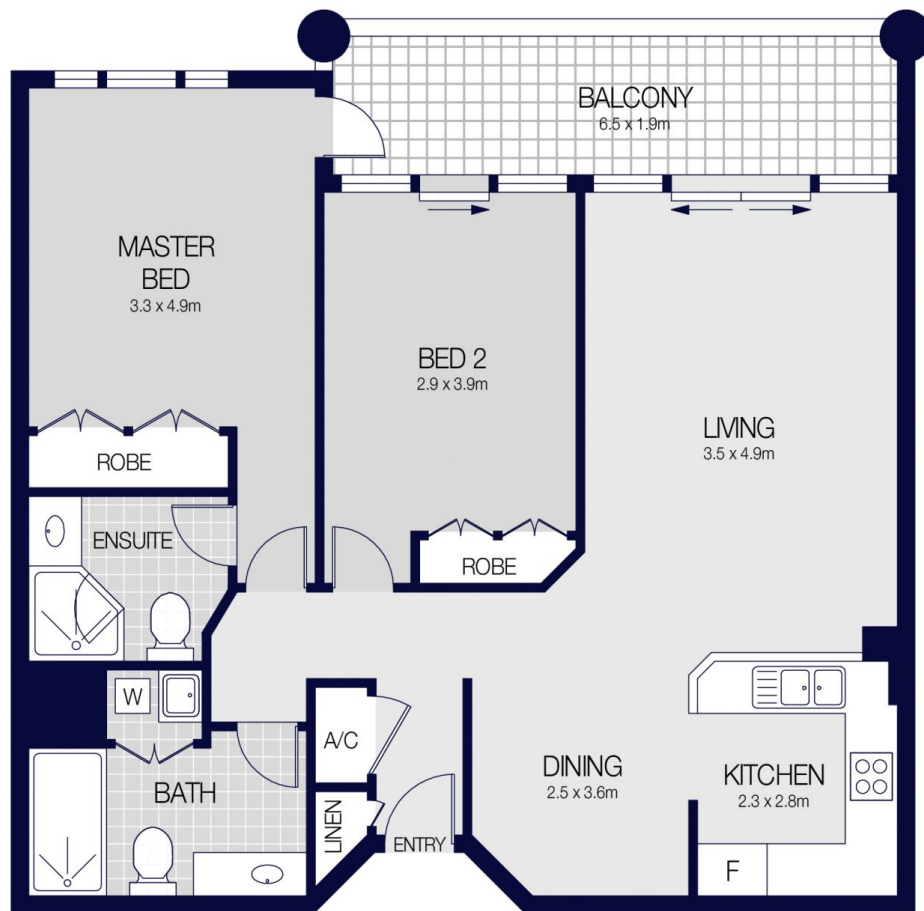
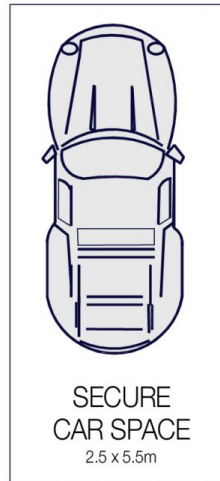


Tasman Fallshaw
02 8248 9104

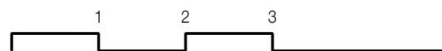


Anthony Kannis
02 8248 9109

<https://www.cityliving.com.au>



1607/50 MURRAY STREET, SYDNEY



Scale in metres. Indicative only. Dimensions are approximate.
All information contained herein is gathered from sources we believe to be reliable.
However we cannot guarantee its accuracy and interested persons should rely on their own enquiries.