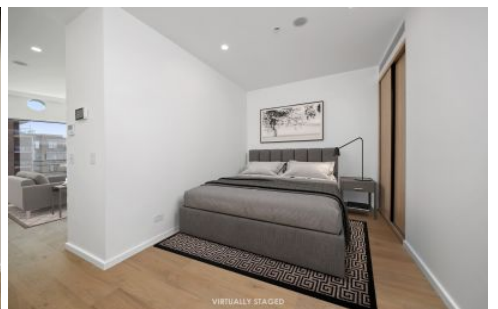
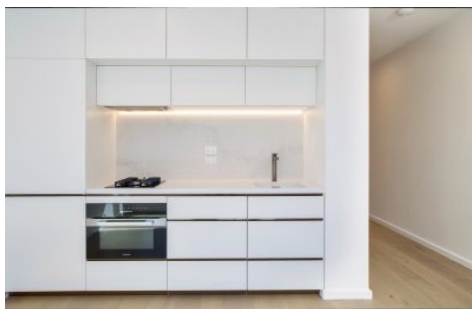


CITY LIVING



2904/116 Bathurst Street Sydney NSW

1 1

Set on the 29th floor of the highly regarded Castle Residences, this stylish contemporary apartment presents a readymade city pad or lifestyle investment in a walk-to-everywhere location.

KEY FEATURES

The Layout - Oriented to the north and flooded with natural light, it features a clever design with open plan living/dining areas enjoying elevated views towards the boat-studded harbour. There is a streamlined stone kitchen with integrated Miele gas appliances, while the bedroom is separated and appointed with a built-in wardrobe.

The Facilities - Residents enjoy access to the complex

[For full version visit the website](https://www.cityliving.com.au)

Type	: Apartment
Price	: \$995,000
Building Size	: 40 sqm
View	: https://www.cityliving.com.au/sale/nsw/sydney-city/sydney/residential/apartment/8087690

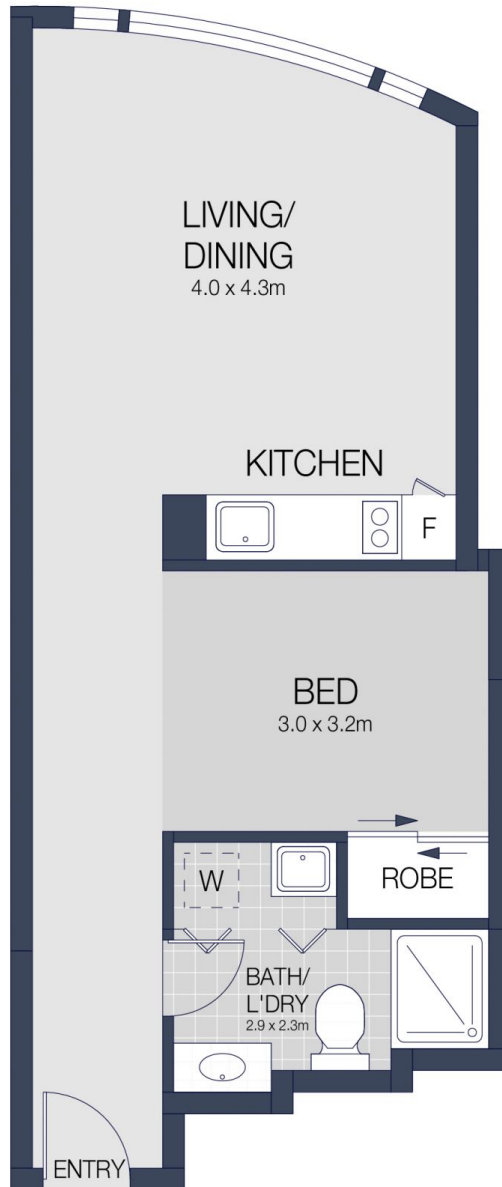


Anthony Kannis
02 8248 9109

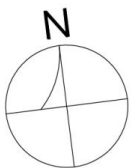


Tasman Fallshaw
02 8248 9104

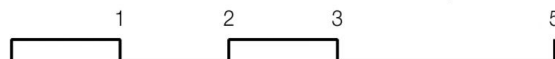
<https://www.cityliving.com.au>



INT : 39m²



2904/116 BATHURST STREET, SYDNEY



Scale in metres. Indicative only. Dimensions are approximate.

All information contained herein is gathered from sources we believe to be reliable.

However we cannot guarantee it's accuracy and interested persons should rely on their own enquiries.