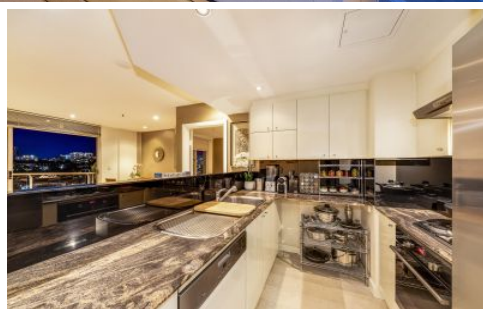
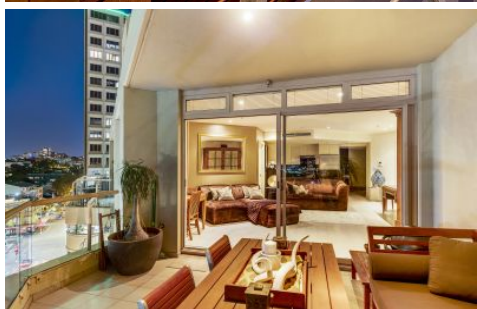


CITY LIVING



1112/63 Crown Street Woolloomooloo NSW

1  1  1 

A fully-furnished executive rental in the heart of Woolloomooloo. This one bedroom apartment comes completely equipped with all essential living needs including high speed internet and gas.

Land Size : 81 sqm

View : <https://www.cityliving.com.au/lease/nsw/sydney-city/woolloomooloo/residential/apartment/7429712>

KEY FEATURES

The Apartment - This beautiful property comes ready for you to bring a suitcase and move in. With no expense spared, it is beautifully renovated throughout with a large outdoor dining area with an amazing view of the city skyline and Woolloomooloo wharf, seen both inside and outside. With one secure parking space and visitor parking to accommodate guests.

The Locale - Set in the heart of Woolloomooloo and walking distance to waterfront cafe's and restaurants,



Anthony Kannis
02 8248 9109