

CITY LIVING



202/17A Hickson Road Walsh Bay NSW

2 🛏 2 🚿 1 🚗

A north-facing apartment on waters edge of Sydney Harbour. This property showcases harbour bridge views and soaking in sunlight, open-plan living and contemporary finishings throughout.

Land Size : 108 sqm
View : <https://www.cityliving.com.au/lease/nsw/sydney-city/walsh-bay/residential/apartment/7429707>

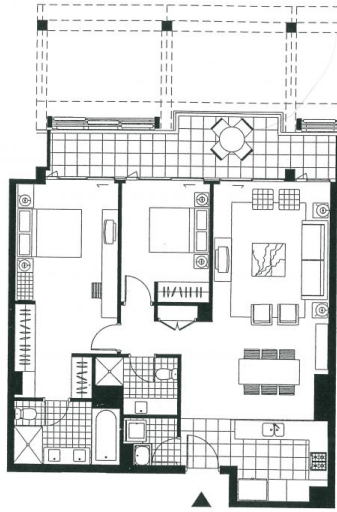
KEY FEATURES

The Aspect - One of the properties greatest features is the north-facing aspect. Right from the entry to the apartment, you are greeted with abundant natural lighting led in from the large balcony that spreads across the living/lounge and both master and second bedroom

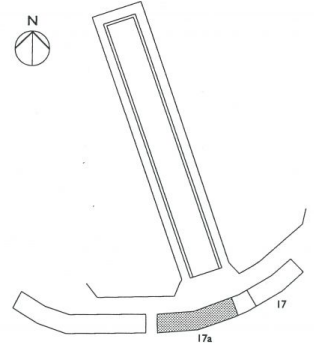
The Location - There are cafe's and restaurants along the Shore with an option of Italian, middle eastern and Australian dining, as well as others surrounding. IGA is across the road for daily necessities



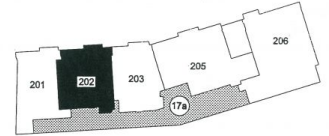
Tasman Fallshaw
02 8248 9104



LEVEL 2



Site Plan



THE SHORE Apartments
17a Hickson Road

2 BEDROOM
 Apartment 202 Level 2
 Living 3.7 x 4.5m
 Dining 4.6 x 3.1m
 Bedroom 1 3.2 x 5.5m
 Bedroom 2 2.8 x 3.8m

NOTE: Room sizes of some bedrooms are taken to back of robe.