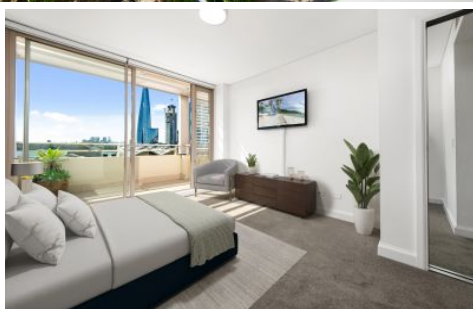


# CITY LIVING



## 1 Murray Street Pyrmont NSW

3 2 2

Situated on the border of Darling Harbour and Pyrmont with north facing harbour views, residents are assured the ultimate city lifestyle with many of Sydney's favourite destinations all within walking distance.

**View :** <https://www.cityliving.com.au/lease/nsw/sydney-city/pyrmont/residential/apartment/7425796>

### KEY FEATURES

The Apartment - Three bedrooms with built-in wardrobes, two bathrooms, master with ensuite & bathtub, spare bedroom with built in study cabinetry. Large lounge and dining space, kitchen with gas cooking. Balcony with north facing harbour views over looking darling harbour, the crown, Pyrmont bay park & King street Wharf. Two secure parking spaces.



**Ryan Steele**  
02 8248 9101

The Building - The Gateway at 1 Murray Street is a secure complex with swipe access to all entrances, the building

<https://www.cityliving.com.au>