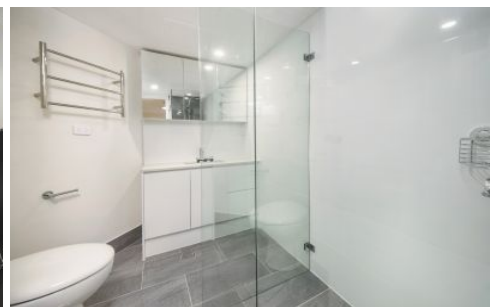
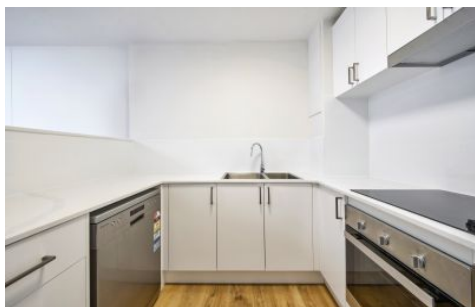


# CITY LIVING



## 160 Goulburn Street Surry Hills NSW

2 1 1

City Living introduces you to this stunning and newly renovated inner city apartment within the Belvedere complex, within walking distance to the CBD & Hyde park.

**View :** <https://www.cityliving.com.au/lease/nsw/eastern-suburbs/surry-hills/residential/apartment/7425789>

### KEY FEATURES

The Apartment - Two bedrooms, renovated open plan kitchen, renovated bathroom & laundry, large dining and lounge-room space, balcony access & a secure basement parking space. Brand new LED lights, carpet & paint throughout.

The Building - 160 Goulburn Street known as "The Belvedere" is a secure building with security swipe access, intercom service, lift access to apartment and underground parking.



**Ryan Steele**  
02 8248 9101