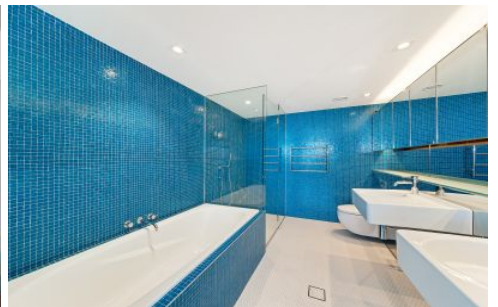


CITY LIVING



180 Campbell Parade Bondi Beach NSW

2 2 1

This furnished executive apartment is part of the Pacific Bondi Beach development, that delivers a stunning view over Bondi Beach and beyond to the horizon. With its first-class, contemporary design and prime location on Campbell Parade this apartment offers residents the quintessential beach lifestyle.

KEY FEATURES

The Apartment - Two bedrooms with built in wardrobes, two bathrooms, master room with ensuite and bathtub, timber flooring throughout, access to balcony from every room, east facing apartment with incredible sunrise views, open plan kitchen with island bench top and gas cooking, additional study room large enough to be a bedroom.

Type : Apartment

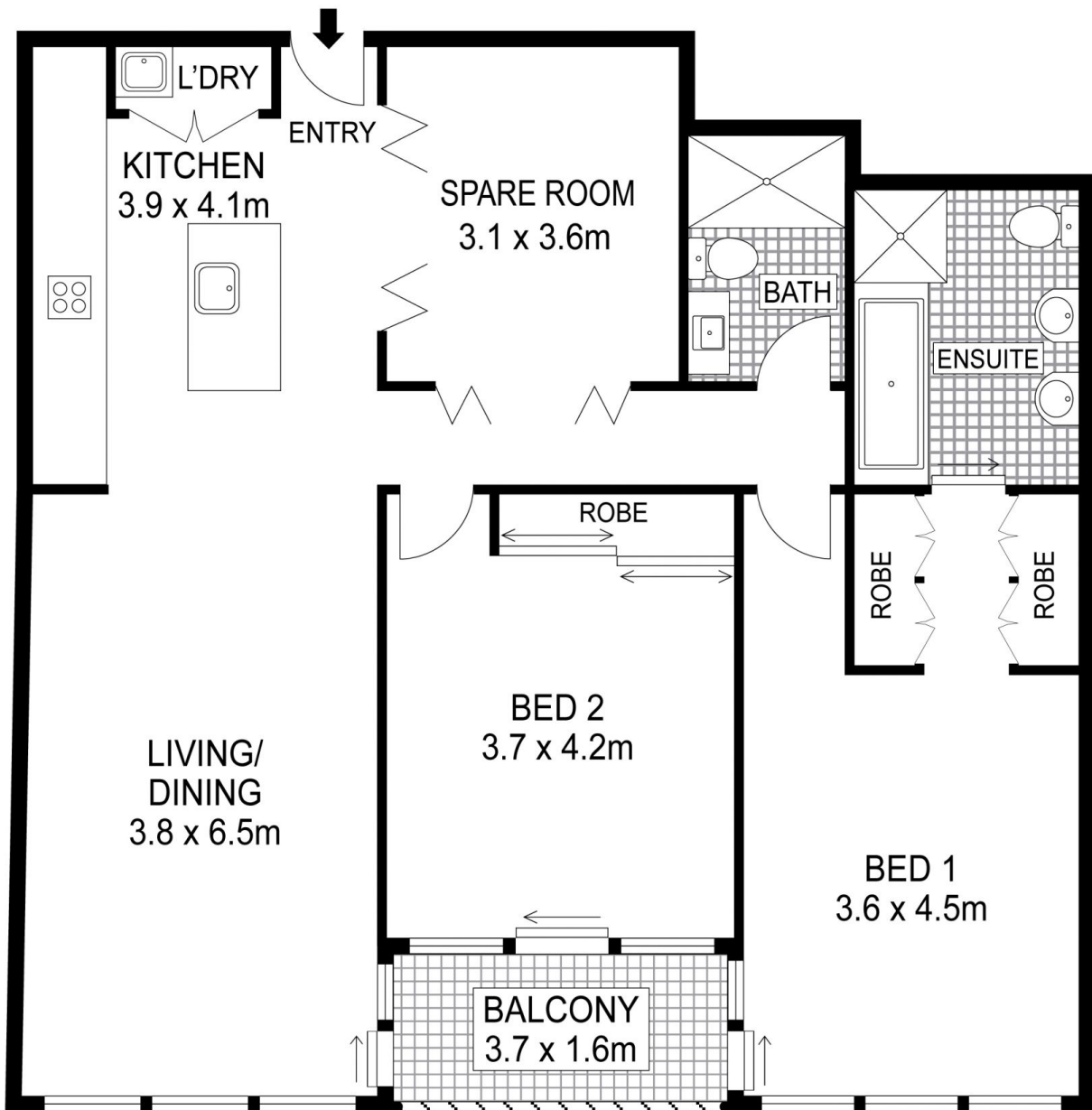
View : <https://www.cityliving.com.au/lease/nsw/eastern-suburbs/bondi-beach/residential/apartment/7422533>



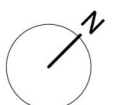
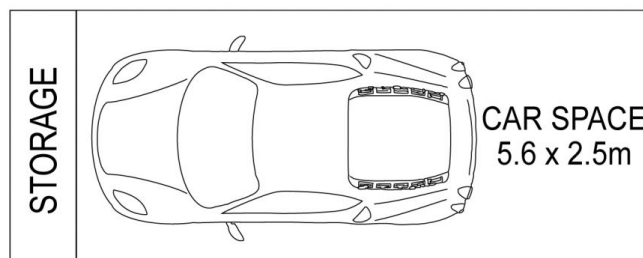
Ryan Steele
02 8248 9101

[For full version visit the website](https://www.cityliving.com.au)

<https://www.cityliving.com.au>



LEVEL TWO



Plans shown are for presentation purposes only and are not part of any legal document or title. They are subject to errors, omissions, inaccuracies and should not be used as a sole and accurate reference. Interested parties should make their own inquiries using independent sources.

214/180 Campbell Parade, Bondi Beach