




CITY LIVING



3/5 Towns Place Walsh Bay NSW

3  2  2 

Coveting a bright position with a northern aspect overlooking the harbour, this designer apartment assures lifestyle excellence in Mirvac's Towns Place development. Barely lived in by our predominantly overseas vendor, it presents as-new across low-maintenance interiors with a luxurious contemporary aesthetic.

KEY FEATURES

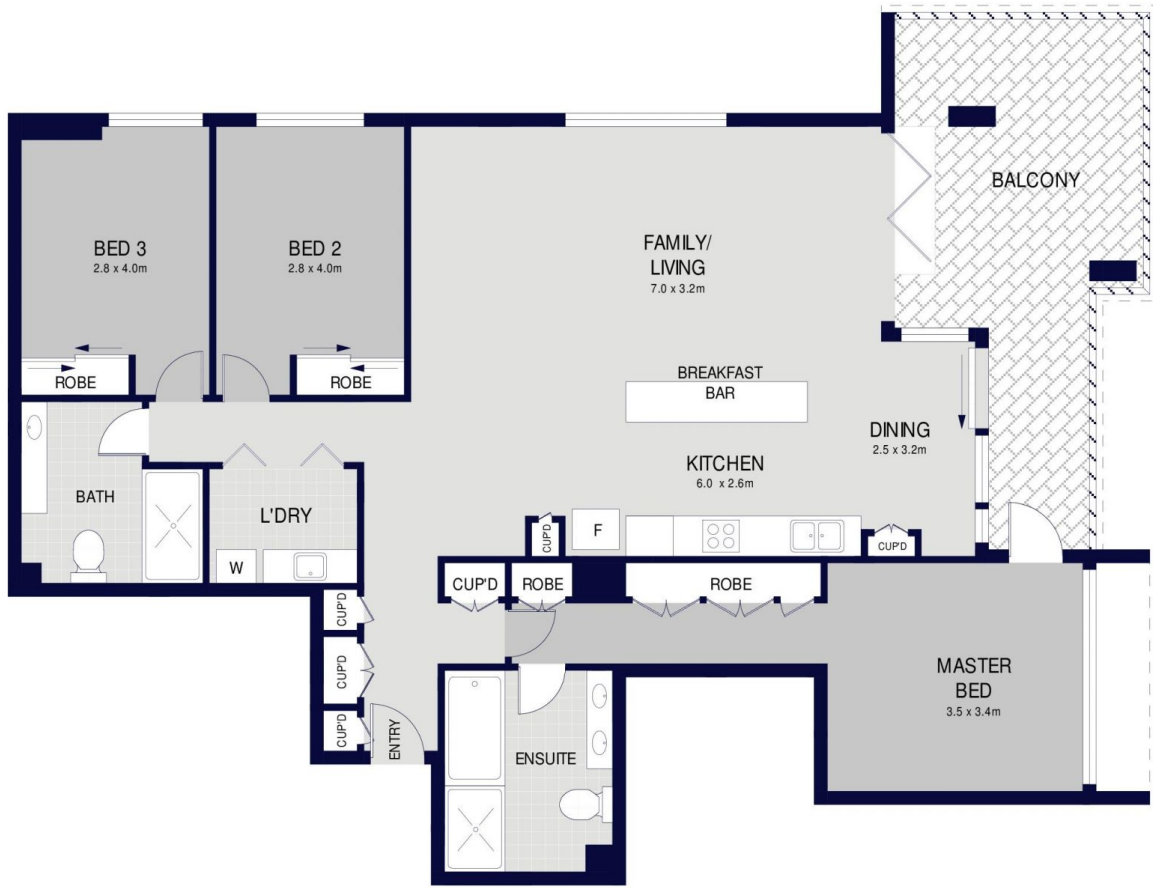
The apartment - The floorplan appeals with both a large living space and the master suite offering access to harbour views and the balcony. This is a superb entertainer, showcasing high-end finishes in the kitchen and bathrooms.

[For full version visit the website](https://www.cityliving.com.au)

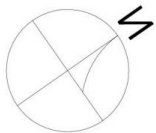
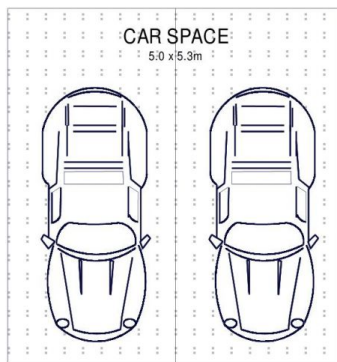
Type : Apartment
Building Size : 139 sqm
View : <https://www.cityliving.com.au/sale/nsw/sydney-city/walsh-bay/residential/apartment/7223442>



Tasman Fallshaw
02 8248 9104



LEVEL THREE



3/5 TOWNS PLACE, MILLERS POINT



Scale in metres. Indicative only. Dimensions are approximate.

All information contained here in is gathered from sources we believe to be reliable. However we cannot guarantee it's accuracy and interested persons should rely on their own enquiries.