

# CITY LIVING



**214/569 George Street Sydney NSW**

1 1

This north facing apartment is perfectly situated to take full advantage of a lifestyle at the heart of Sydney's most vibrant CBD precinct. It's also a sundrenched and serene idyll, enjoying a swimming pool, gym, sauna and barbecue facilities.

**Type** : Apartment  
**Building Size** : 62 sqm  
**View** : <https://www.cityliving.com.au/sale/nsw/sydney-city/sydney/residential/apartment/7223433>

## KEY FEATURES

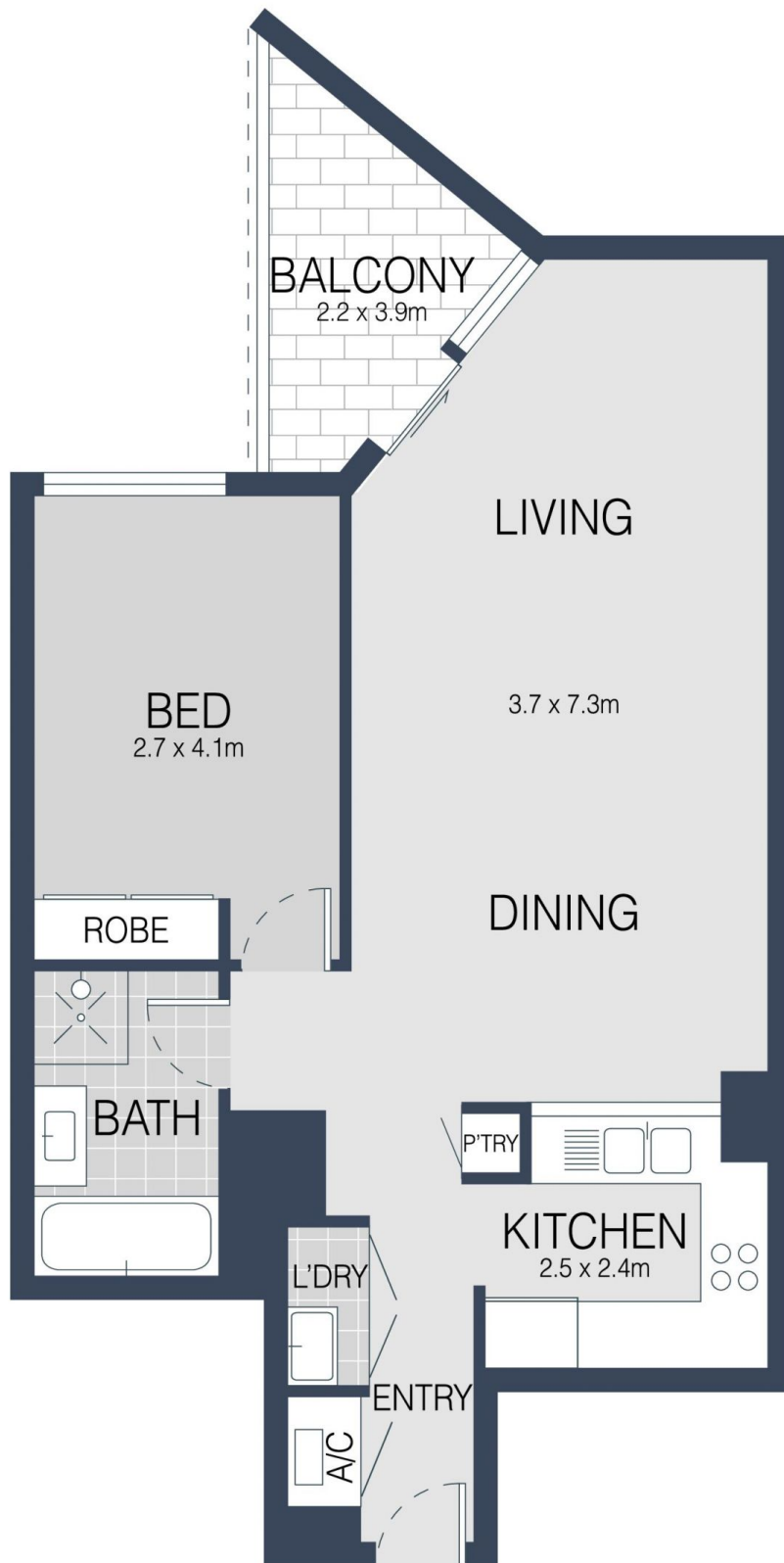
The layout - Capitalising on its northern outlook and view that takes in tree-lined Kent Street, sunlight flows over the balcony and through floor to ceiling glass into the bedroom and living area while the kitchen and bathroom flank the entrance hallway.



**Tasman Fallshaw**  
**02 8248 9104**

[For full version visit the website](https://www.cityliving.com.au)

<https://www.cityliving.com.au>



LEVEL SEVEN

214/569 GEORGE STREET, SYDNEY



Scale in metres. Indicative only. Dimensions are approximate.  
All information contained here in is gathered from sources we believe to be reliable.  
However we cannot guarantee its accuracy and interested persons should rely on their own enquires.