

# CITY LIVING



**133/25 Market Street Sydney NSW**

1 1

This smartly presented north-facing apartment offers a sought after city lifestyle of comfort and exceptional convenience. Basking in panoramic cityscape views across to Darling Harbour, it's ready to move in and enjoy with scope to add your own personal touch.

**Price** : \$ 768,000  
**Building Size** : 70 sqm  
**View** : <https://www.cityliving.com.au/sale/nsw/sydney-city/sydney/residential/apartment/7223419>

## KEY FEATURES

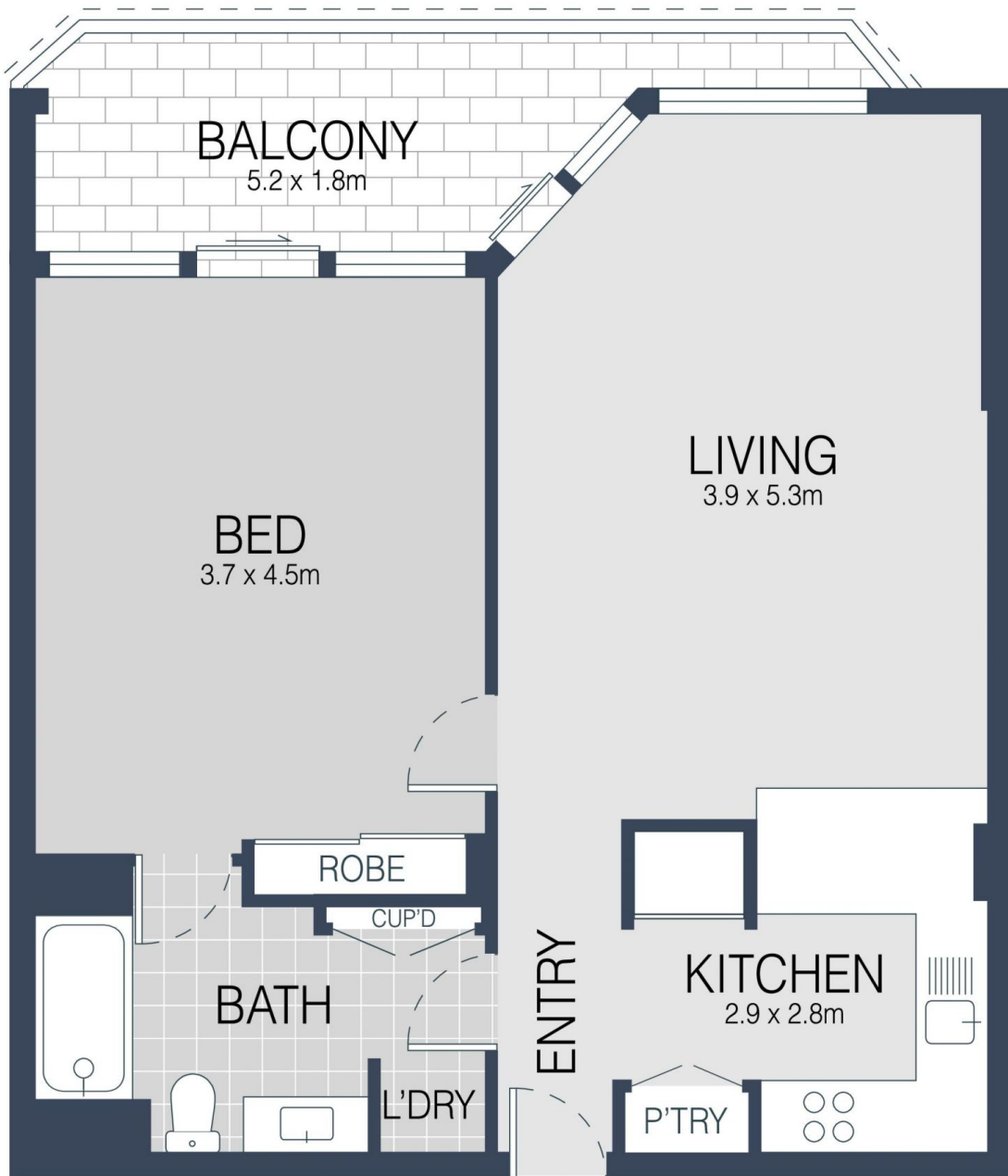
The layout - The spacious living zone and full length balcony are bathed in all day light, a generous double bedroom leads to an ensuite bathroom and the freshly presented kitchen comes equipped with quality stainless steel appliances.

The building - One of Sydney's tightest held inner city developments, 'The Berkeley' is a secure and well maintained building that offers a weekday building manager



**Tasman Fallshaw**  
**02 8248 9104**

<https://www.cityliving.com.au>



## LEVEL THIRTEEN



133/25 MARKET STREET, SYDNEY



Scale in metres. Indicative only. Dimensions are approximate.  
 All information contained here in is gathered from sources we believe to be reliable.  
 However we cannot guarantee its accuracy and interested persons should rely on their own enquires.