

CITY LIVING



10/253 Goulburn Street Surry Hills NSW

2  2  1 

Instantly impressive with its luxe proportions and restful outdoor flow from every room, this sixth floor 'Darlington' apartment provides the perfect blank canvas. And only a few short strides from Crown Street, the convenience is in a league of its own.

KEY FEATURES

The space - A fabulous open-plan living and kitchen area is ready to transform into your ultimate urban retreat, with two generous built-in bedrooms, a neat ensuite and a combined bath/laundry completing the potential-packed floor plan.

The ambience - Outside, an enormous full-width terrace is

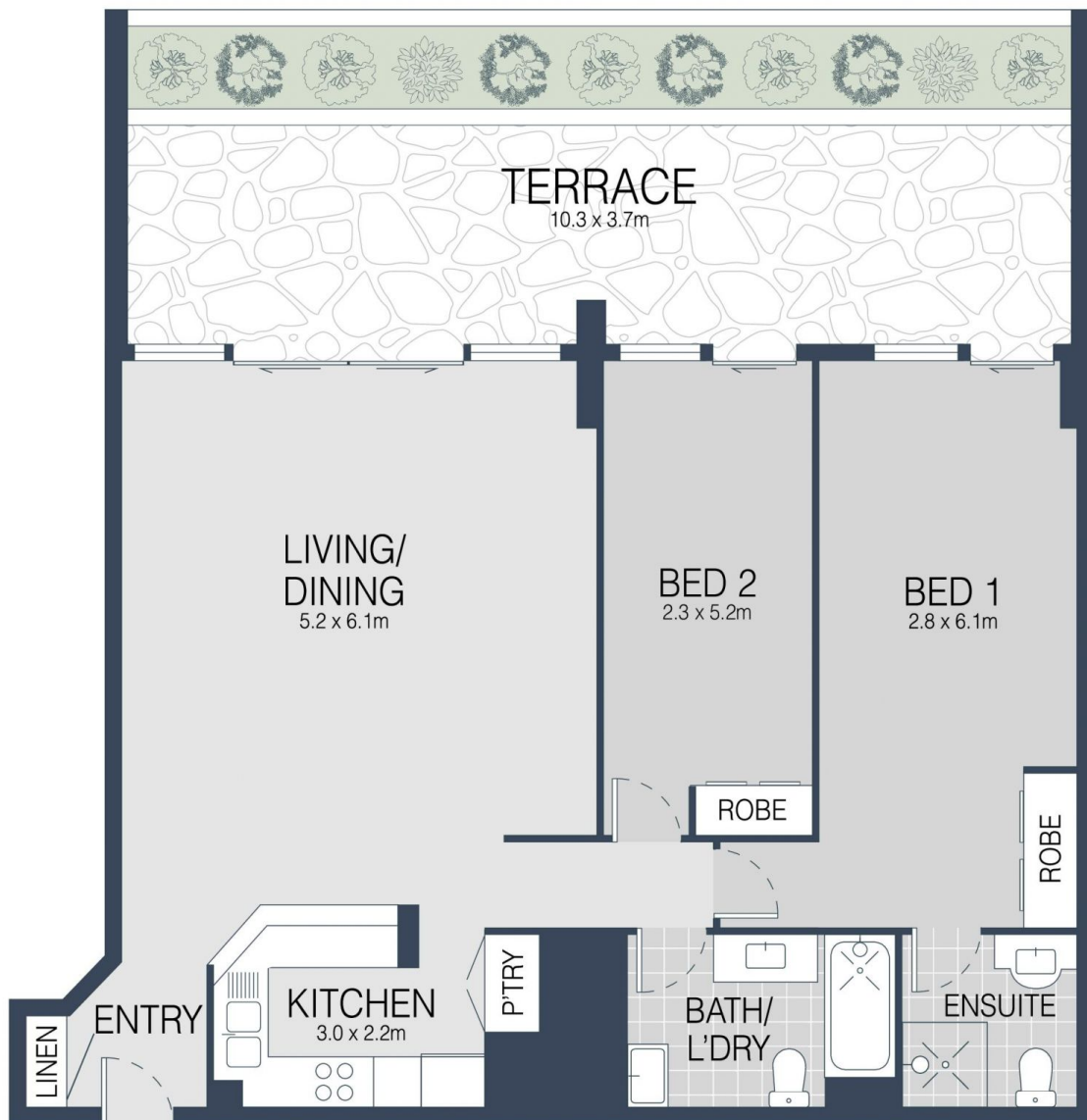
[For full version visit the website](https://www.cityliving.com.au/sale/nsw/east-ern-suburbs/surry-hills/residential/apartment/7223418)

Type : Apartment
Land Size : 123 sqm
View : <https://www.cityliving.com.au/sale/nsw/east-ern-suburbs/surry-hills/residential/apartment/7223418>

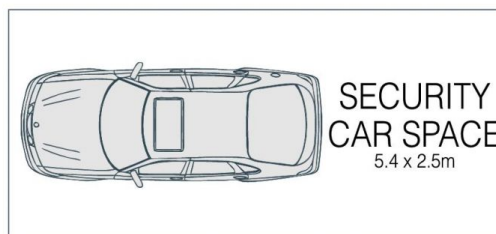


Tasman Fallshaw
02 8248 9104

<https://www.cityliving.com.au>



LEVEL SIX



10/253 GOULBURN STREET, SURRY HILLS



Scale in metres. Indicative only. Dimensions are approximate.
 All information contained here in is gathered from sources we believe to be reliable.
 However we cannot guarantee its accuracy and interested persons should rely on their own enquires.