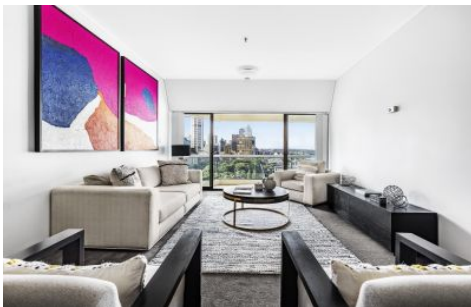


CITY LIVING



1907/187 Liverpool Street Sydney NSW

2  2  1 

This superb CBD apartment offers a level of exclusivity and urban lifestyle that is simply unparalleled. Capturing stunning 180-degree views, its functional single level layout is ready to move in and enjoy with scope to further update if so desired.

Building Size : 111 sqm
View : <https://www.cityliving.com.au/sale/nsw/sydney-city/sydney/residential/apartment/7223416>

KEY FEATURES

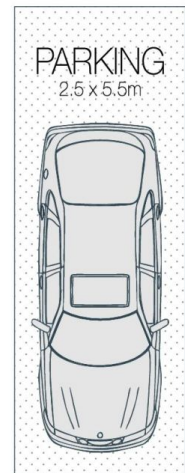
The layout - A spacious open plan living and dining zone drenched in all day northern sun flows effortlessly to the outdoors, the kitchen and bathrooms are well presented and both the master ensuite and second double bedroom enjoy great storage.

The terrace - A full length terrace provides the perfect space to entertain or simply relax and soak in the spectacular views of Hyde Park, Sydney Harbour and the



Tasman Fallshaw
02 8248 9104

<https://www.cityliving.com.au>



LEVEL NINETEEN



1907/187 LIVERPOOL STREET, SYDNEY CITY



Scale in metres. Indicative only. Dimensions are approximate.

All information contained here in is gathered from sources we believe to be reliable.

However we cannot guarantee its accuracy and interested persons should rely on their own enquires.