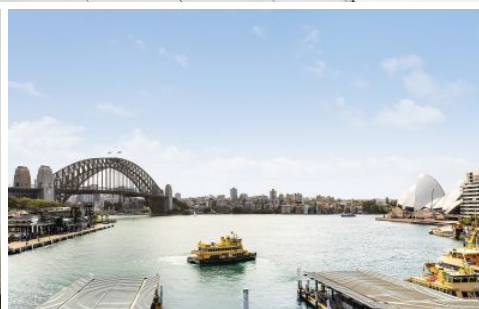
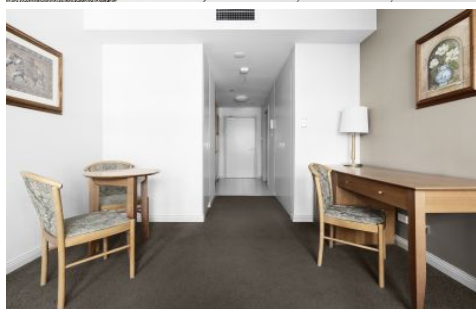


# CITY LIVING



1102/38-42 Bridge Street Sydney NSW

1 1

This smart studio apartment positioned in the contemporary 'Bridgeport' building offers a cosmopolitan lifestyle of exceptional convenience. Capturing an impressive cityscape outlook, it presents the perfect opportunity for professionals and forward-thinking investors.

**Building Size** : 30 sqm  
**View** : <https://www.cityliving.com.au/sale/nsw/sydney-city/sydney/residential/apartment/7223415>

## KEY FEATURES

The layout - A functional layout cleverly maximises the use space to present a comfortably combined living/sleeping zone, plus a smartly integrated kitchen, built-in robes/storage and a freshly presented bathroom with laundry facilities.

The building - The secure 'Bridgeport' offers recently refurbished common areas, gymnasium, lift access and



**Tasman Fallshaw**  
02 8248 9104

<https://www.cityliving.com.au>



# LEVEL ELEVEN

1002/38 BRIDGE STREET, SYDNEY



Scale in metres. Indicative only. Dimensions are approximate.  
 All information contained here in is gathered from sources we believe to be reliable.  
 However we cannot guarantee its accuracy and interested persons should rely on their own enquiries.