

CITY LIVING



W704/2 Chippendale Way Chippendale NSW

2  2  1 

Located in the 'Central Park East' West tower, this dual key apartment provides the ultimate home or investment in a prized lifestyle address. It allows residents to enjoy an ultra-modern city base with the added option to receive extra passive income.

Land Size : 122 sqm

View : <https://www.cityliving.com.au/sale/nsw/sydney-city/chippendale/residential/apartment/7223410>

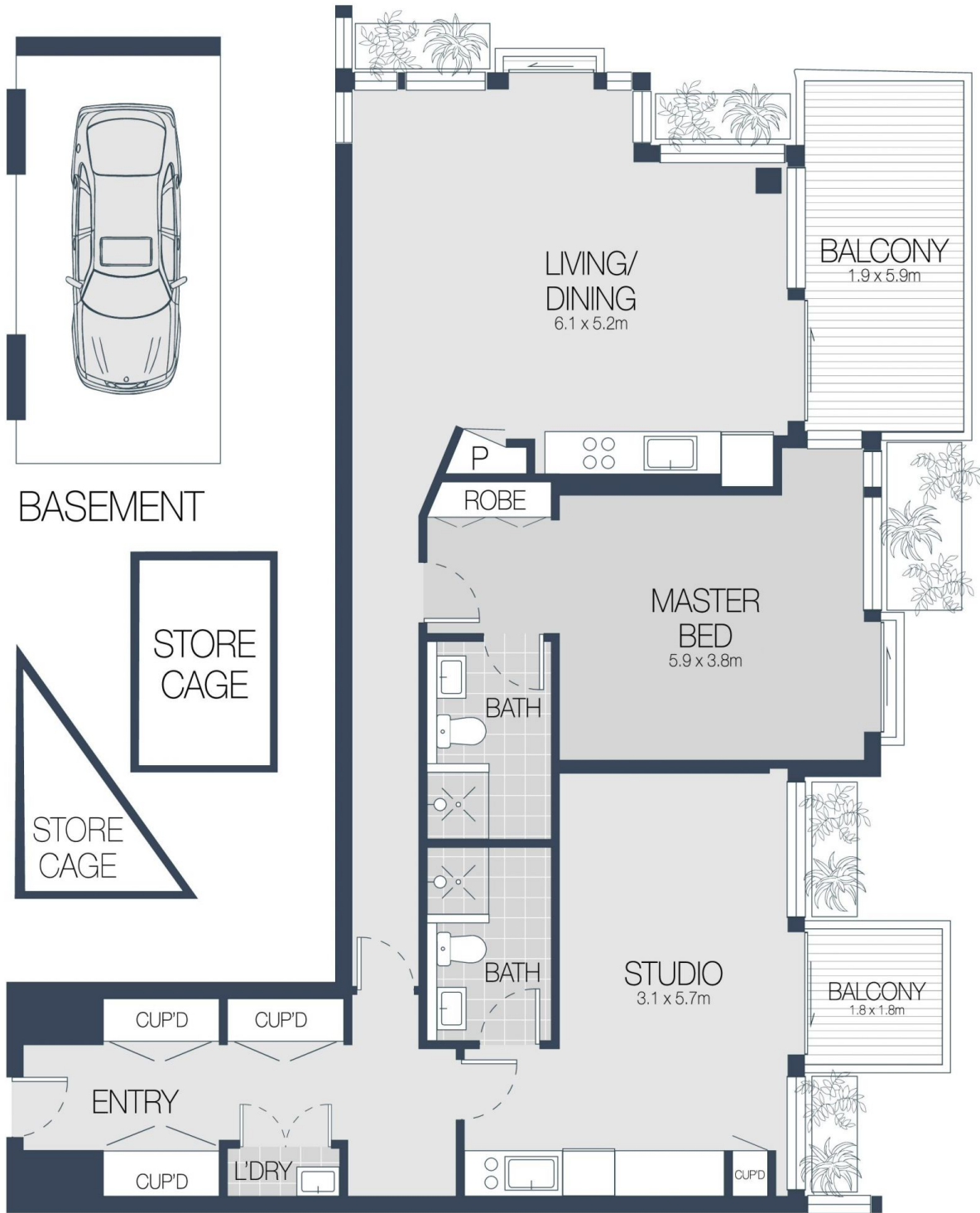
KEY FEATURES

The layout -A stylish contemporary design reveals striking open layouts featuring sleek kitchens with Smeg appliances plus chic bathrooms. The one bedroom apartment is wonderfully spacious with combined living/dining plus a generous bedroom with a built-in robe.

The terrace - Both the studio and one bedroom apartment open to generous sun soaked balconies with sweeping elevated views over beautiful Chippendale Green and



Tasman Fallshaw
02 8248 9104



BASEMENT

STORE
CAGE

STORE
CAGE

LIVING/
DINING
6.1 x 5.2m

BALCONY
1.9 x 5.9m

P
ROBE

MASTER
BED
5.9 x 3.8m

BATH

BATH

STUDIO
3.1 x 5.7m

BALCONY
1.8 x 1.8m

CUP'D

CUP'D

ENTRY

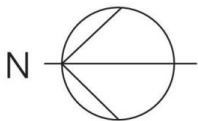
CUP'D

L'DRY

CUP'D

SEVENTH FLOOR

704/2 CHIPPENDALE WAY, CHIPPENDALE



Scale in metres. Indicative only. Dimensions are approximate.

All information contained here in is gathered from sources we believe to be reliable.

However we cannot guarantee its accuracy and interested persons should rely on their own enquires.