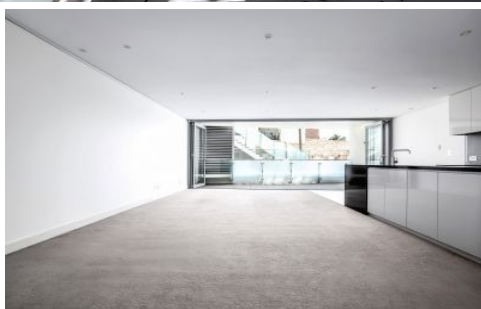





CITY LIVING



1/25A Hickson Road Walsh Bay NSW

2  2  1 

A fantastic harbourside lifestyle is on offer in the exclusive Walsh Bay precinct with this tastefully appointed two-bedroom apartment. Set within Mirvac's renowned Towns Place building, it makes an instant impact with its generous proportions, fresh bright interiors and premier waterfront location that's adjacent to Barangaroo Reserve with foreshore walks and parks just metres from the front door.

KEY FEATURES

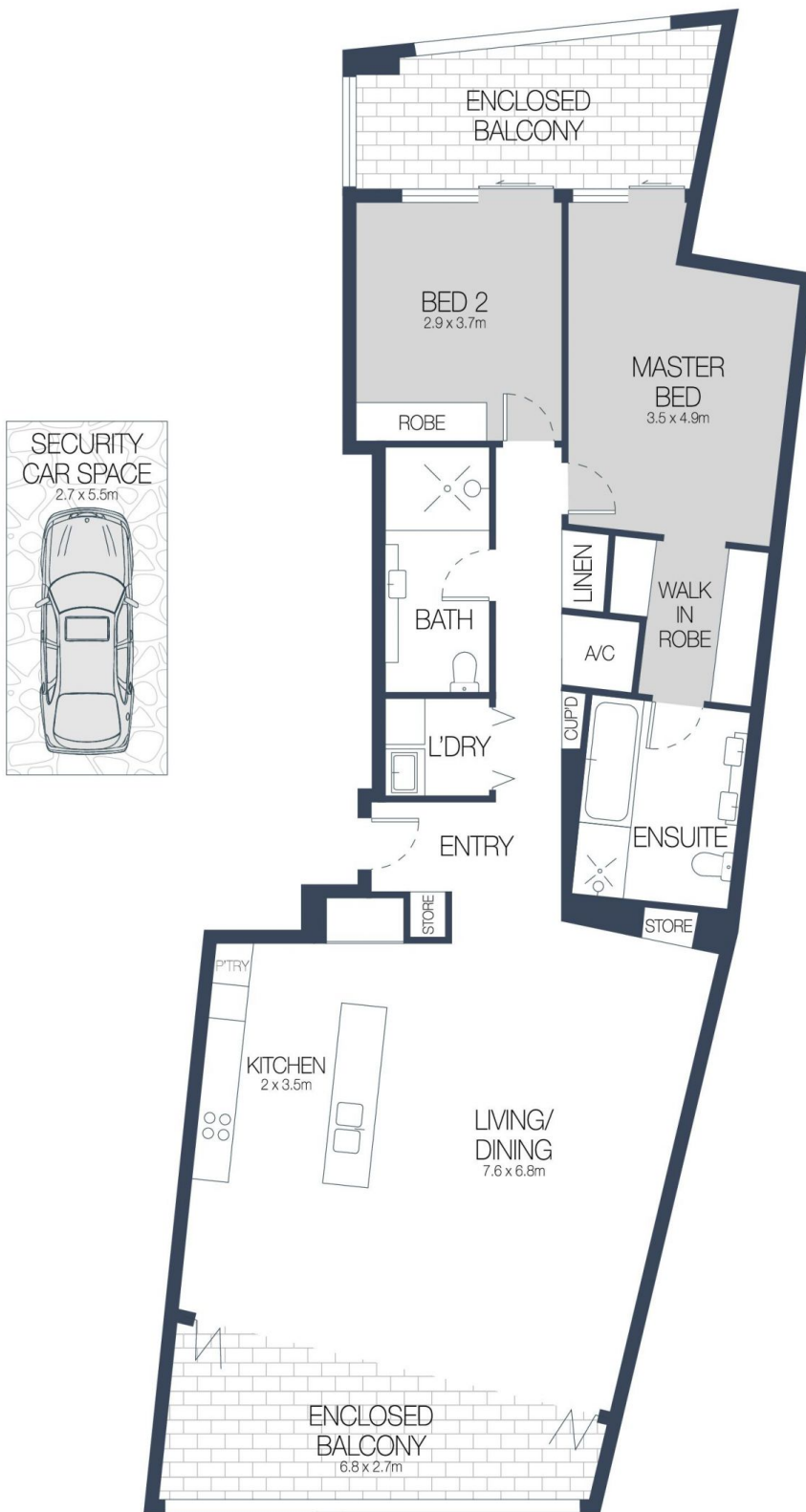
The layout - Inside is a very well-proportioned open plan design with lots of natural light, a designer island kitchen with sleek Miele fittings and a seamless flow to a large north facing terrace that's perfect for entertaining.

The amenities - Residents have access to the building's full

Building Size : 137 sqm
View : <https://www.cityliving.com.au/sale/nsw/sydney-city/walsh-bay/residential/apartment/7223407>



Tasman Fallshaw
02 8248 9104



1/25A HICKSON ROAD, MILLERS POINT



Scale in metres. Indicative only. Dimensions are approximate.
 All information contained here in is gathered from sources we believe to be reliable.
 However we cannot guarantee its accuracy and interested persons should rely on their own enquires.