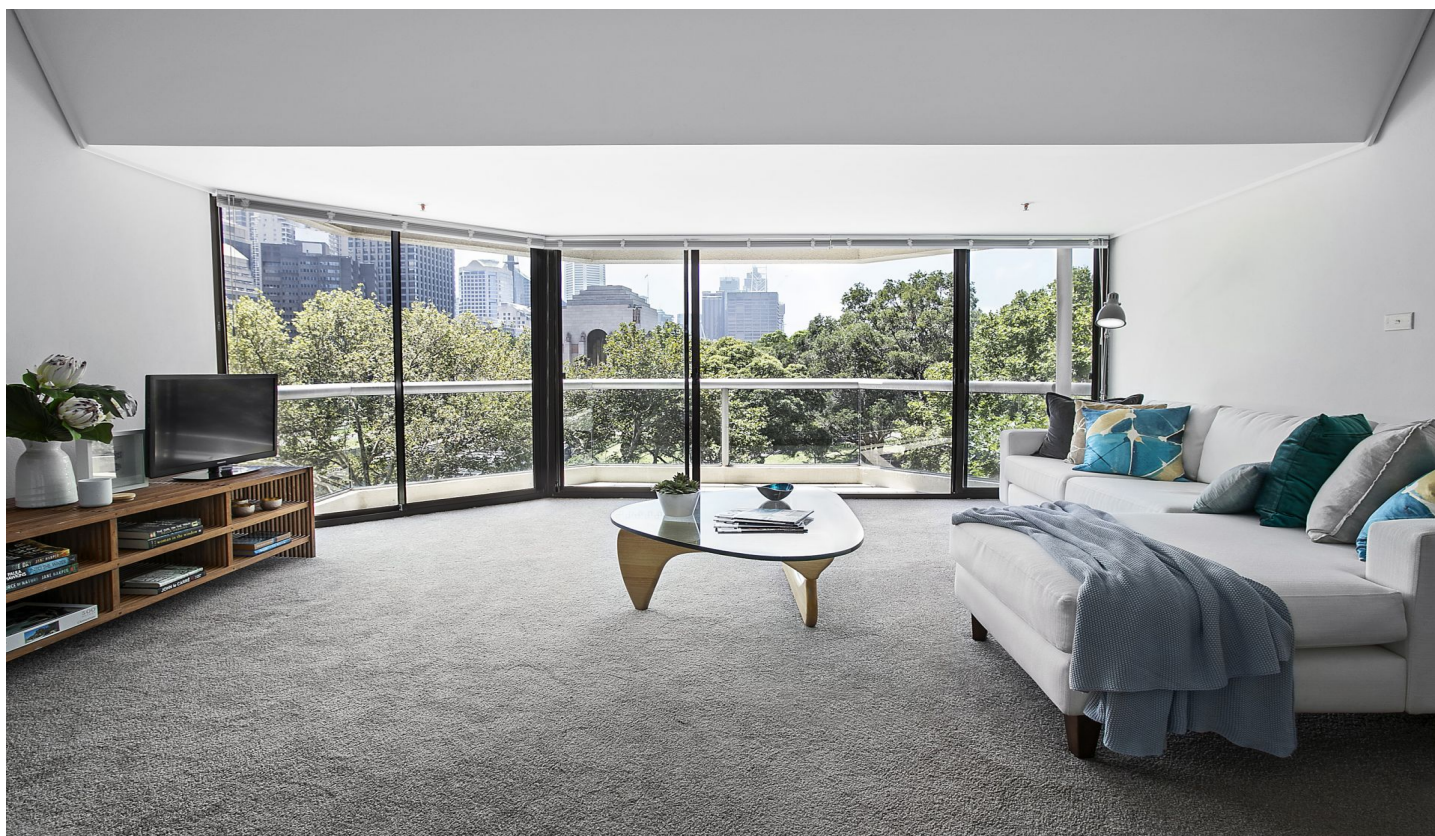





CITY LIVING



302/187 Liverpool Street Sydney NSW

2  **2**  **1** 

Placed on the doorstep to the exhilarating beat of the city, this smartly presented apartment offers prized views and an envious cosmopolitan lifestyle. Private and spacious, it boasts a level of exclusivity that is simply unparalleled.

Building Size : 101 sqm
View : <https://www.cityliving.com.au/sale/nsw/sydney-city/sydney/residential/apartment/7223402>

KEY FEATURES

The views - A prized due north aspect encompasses a sweeping 180-degree panorama of the CBD across to Hyde Park and Darlinghurst.

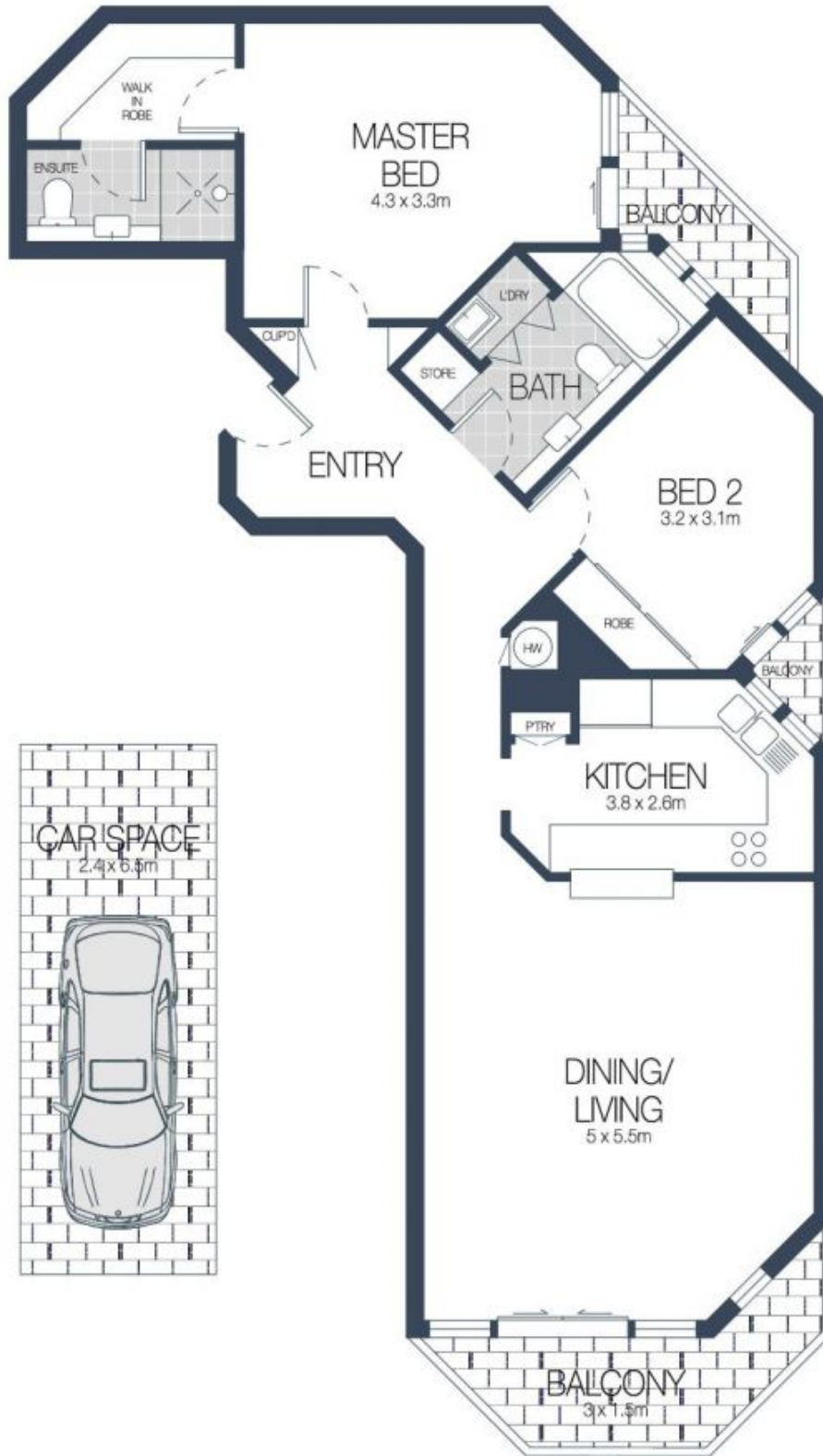
The layout - The spacious open plan living and dining enjoys high ceilings and great sunlight, and the master ensuite and second bedrooms are both equipped with private balconies.

The lifestyle - Positioned in one of Sydney's landmark



Tasman Fallshaw
02 8248 9104

<https://www.cityliving.com.au>



LEVEL THREE

302/187 LIVERPOOL STREET, SYDNEY



Scale in metres. Indicative only. Dimensions are approximate.
 All information contained here in is gathered from sources we believe to be reliable.
 However we cannot guarantee its accuracy and interested persons should rely on their own enquires.