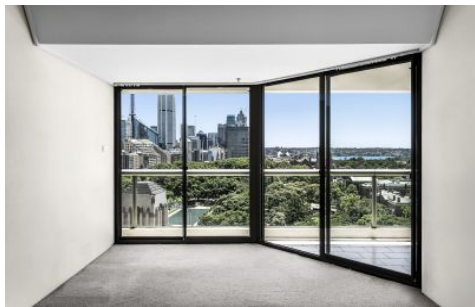


# CITY LIVING



**1404/187 Liverpool Street Sydney NSW**

2  2  1 

From its elevated vantage point in the landmark Connaught building, this apartment has a spectacular view over Hyde Park, the city skyline and harbour. It provides an inner city retreat with light and airy interiors, good proportions and excellent scope to add value through an update or renovation.

## KEY FEATURES

**The location** - This highly coveted building is location at the very heart of all the attractions that make Sydney such a sought after lifestyle destination with shopping, entertainment and restaurants just a brief stroll from the front door

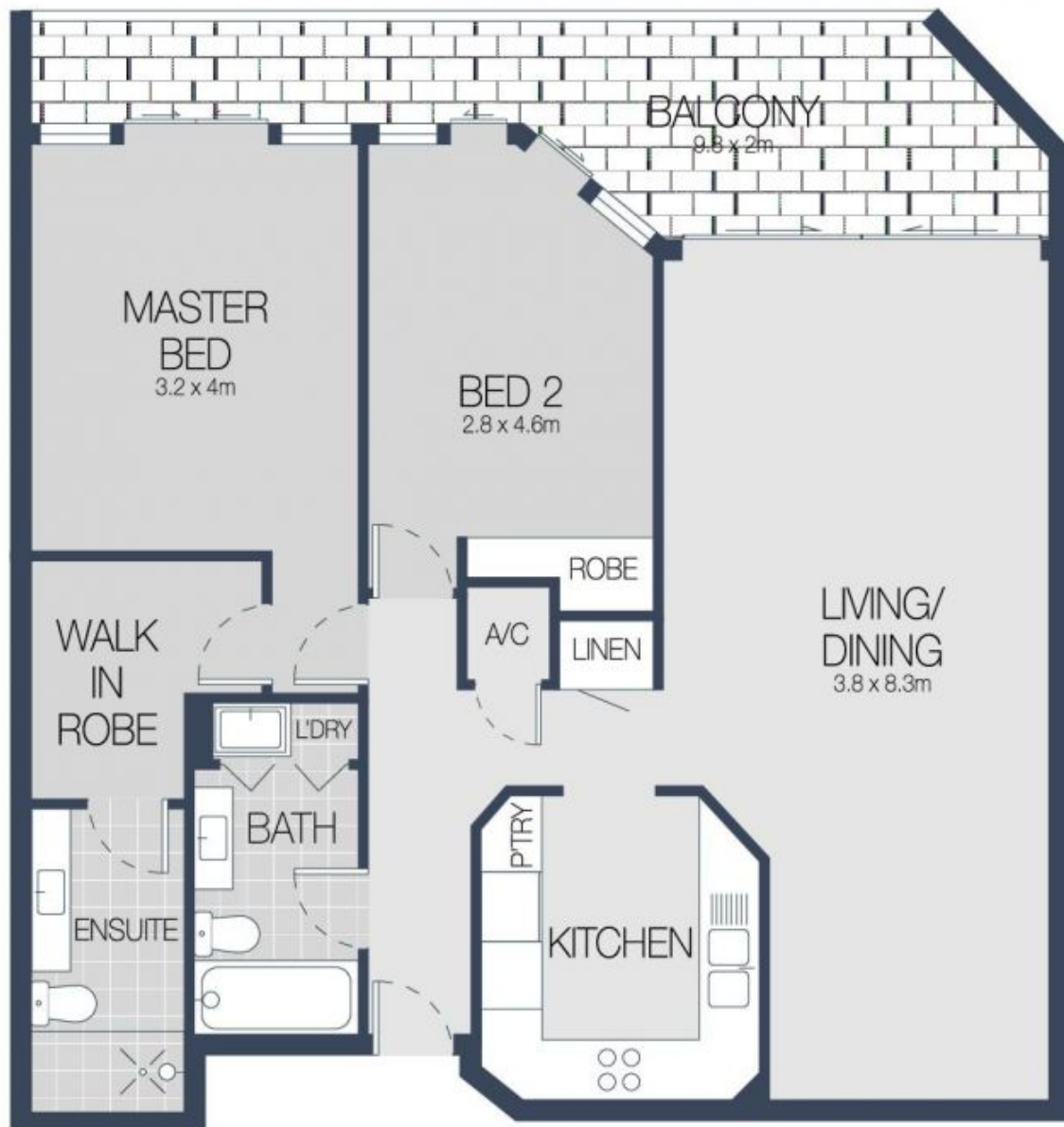
**The aspect** - With a northern aspect and floor to ceiling windows this apartment is flooded with natural light and

**Building Size** : 106 sqm

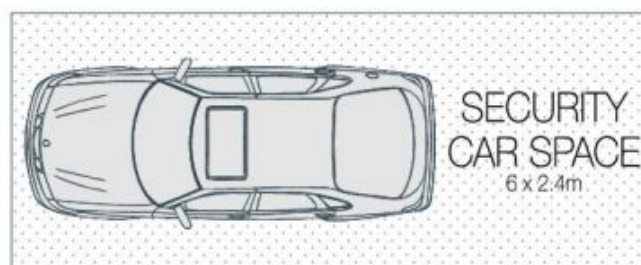
**View** : <https://www.cityliving.com.au/sale/nsw/sydney-city/sydney/residential/apartment/7223401>



**Tasman Fallshaw**  
**02 8248 9104**



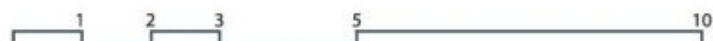
LEVEL FOURTEEN



LEVEL B2



1404/187 LIVERPOOL STREET, SYDNEY



Scale in metres. Indicative only. Dimensions are approximate.  
 All information contained here in is gathered from sources we believe to be reliable.  
 However we cannot guarantee its accuracy and interested persons should rely on their own enquires.