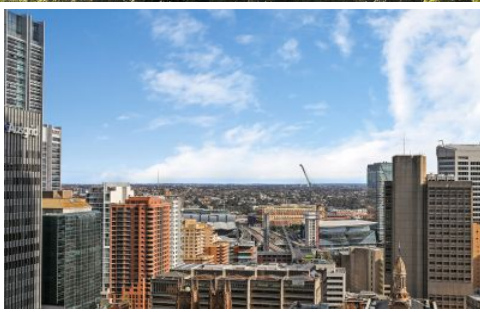
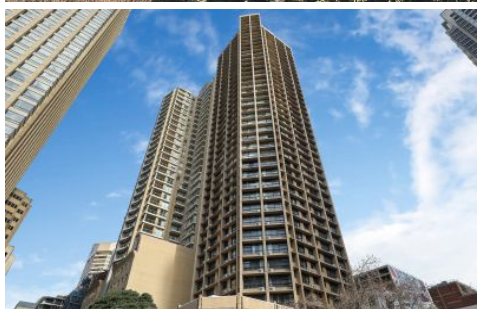


CITY LIVING



291/27 Park Street Sydney NSW

1 1 1

City living is made easy with the handy location of this apartment that captures stunning panoramas across the harbour to the northern suburbs from its level 29 setting. A great investment or city pad, it is positioned to enjoy the best of the CBD, with Hyde Park, David Jones, Pitt Street Mall, a supermarket, movie theatre, public transport and wealth of eateries nearby.

Type : Apartment
Building Size : 45 sqm
Land Size : 58 sqm
View : <https://www.cityliving.com.au/sale/nsw/sydney-city/sydney/residential/apartment/7223397>

KEY FEATURES

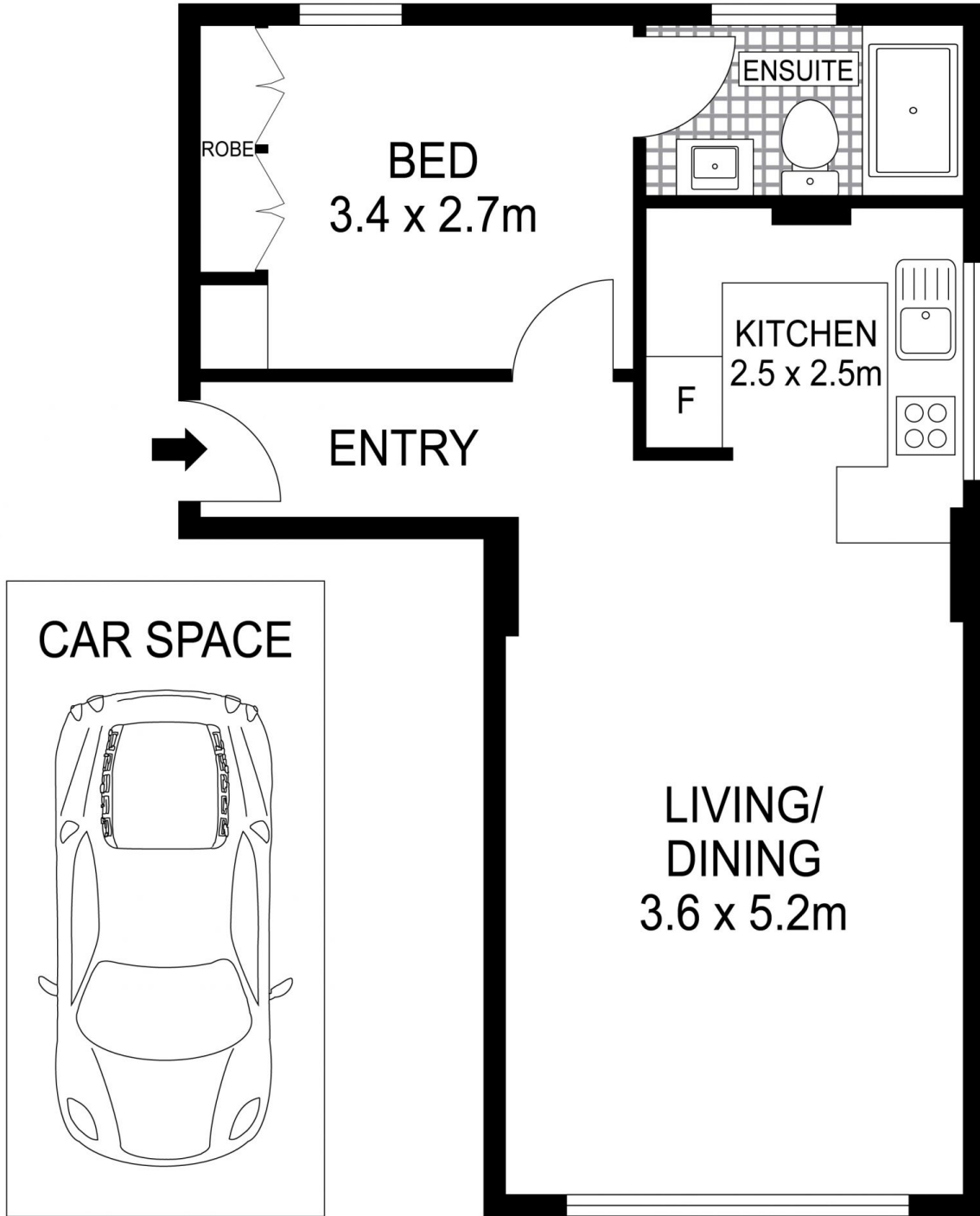
The apartment - Designed for a low maintenance and stress free life, the layout delivers a light-filled living area, built-ins in the bedroom and a highly sought after car space, which is a rare offering for a one-bedroom apartment in the city

[For full version visit the website](#)

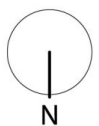


Tasman Fallshaw
02 8248 9104

<https://www.cityliving.com.au>



LEVEL TWENTY NINE



Plans shown are for presentation purposes only and are not part of any legal document or title. They are subject to errors, omissions, inaccuracies and should not be used as a sole and accurate reference. Interested parties should make their own inquiries using independent sources.

291/27 Park Street, Sydney