

CITY LIVING



603/21A Hickson Road Walsh Bay NSW

2  2  1 

This unique apartment is undeniably one of the best in Mirvac's Shore 8/9 development, delivering a stunning vista over the harbour to Goat Island and beyond, as well as an uninterrupted view of Sydney's iconic harbour bridge.

KEY FEATURES

The design - This apartment has an open plan layout suiting today's convivial lifestyle perfectly and has been finished impeccably using only the best quality materials including natural stone and rich wool

The balcony - Running the full-width of the apartment and accessible from both the bedrooms and the open plan living area, it is the ideal setting to enjoy with friends and

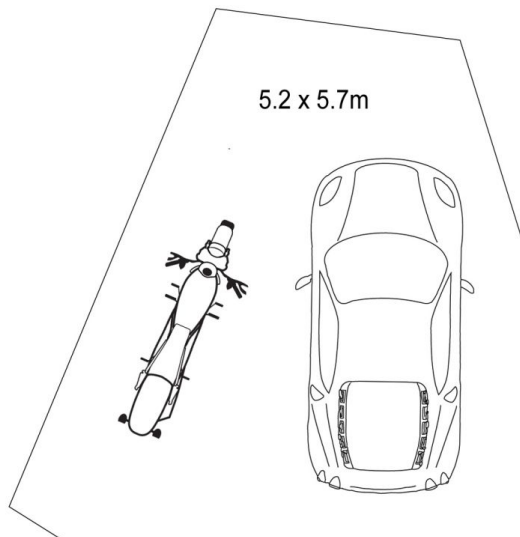
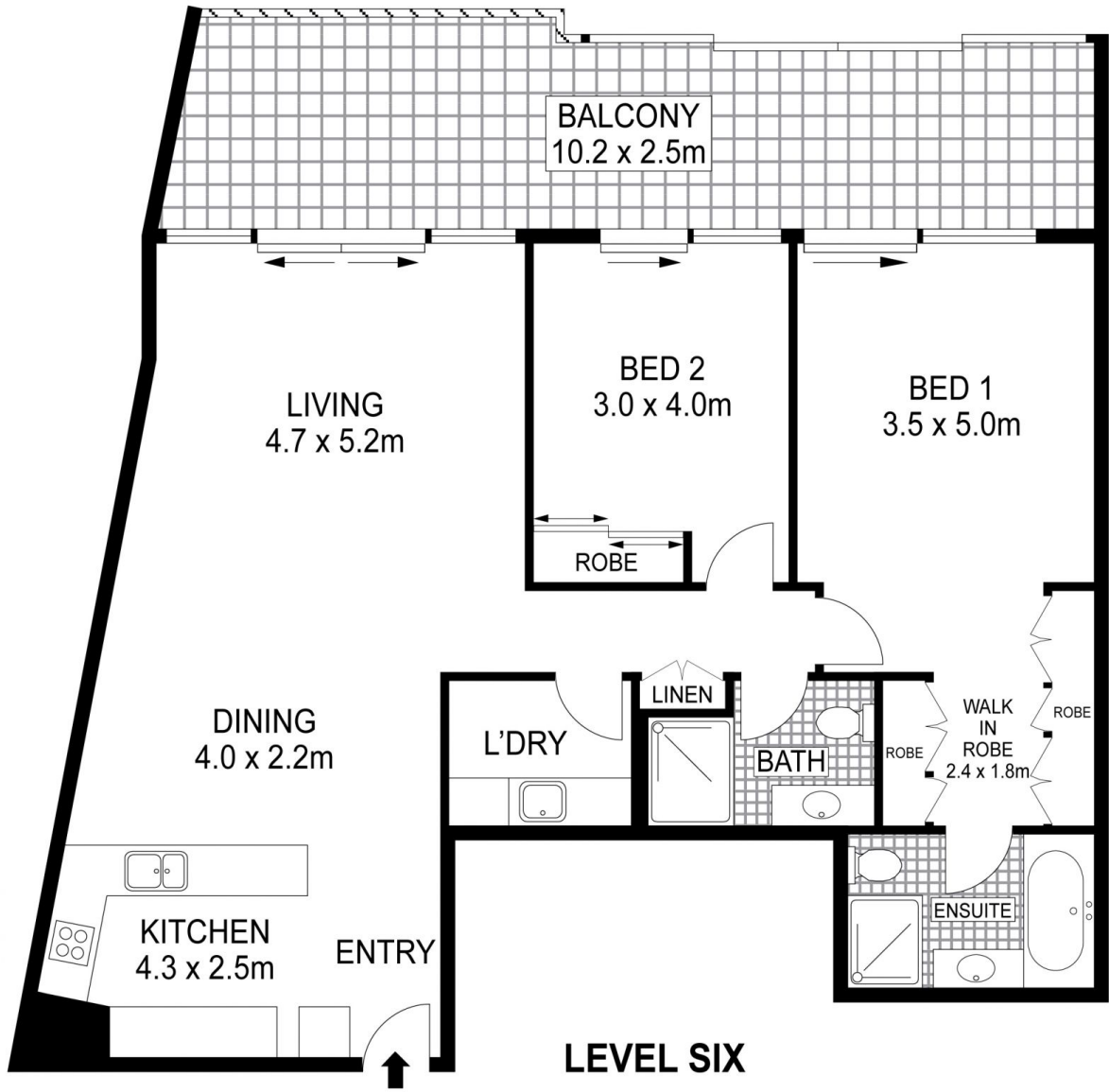
[For full version visit the website](https://www.cityliving.com.au)

Type : Apartment
Price : \$ 2,960,000
Building Size : 115 sqm
View : <https://www.cityliving.com.au/sale/nsw/sydney-city/walsh-bay/residential/apartment/7223393>



Tasman Fallshaw
02 8248 9104

<https://www.cityliving.com.au>



Plans shown are for presentation purposes only and are not part of any legal document or title. They are subject to errors, omissions, inaccuracies and should not be used as a sole and accurate reference. Interested parties should make their own inquiries using independent sources.

603/21A Hickson Road, Walsh Bay