

CITY LIVING



605/19 Hickson Road Walsh Bay NSW

3 3 2

A rare offering in the prized Pier 6/7 development, this stunning penthouse delivers spectacular views day and night, along with privacy and an organic indoor/outdoor flow. Bathed in natural light and finished with premium materials, residents are afforded a contemporary harbour-side lifestyle in a world-class location.

KEY FEATURES

The layout - Designed with privacy in mind, the master suite is slightly removed from the living area, while the other two bedrooms, which are situated on level two, along with a study and private terrace, overlook Sydney's iconic harbour bridge

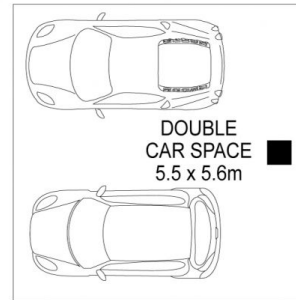
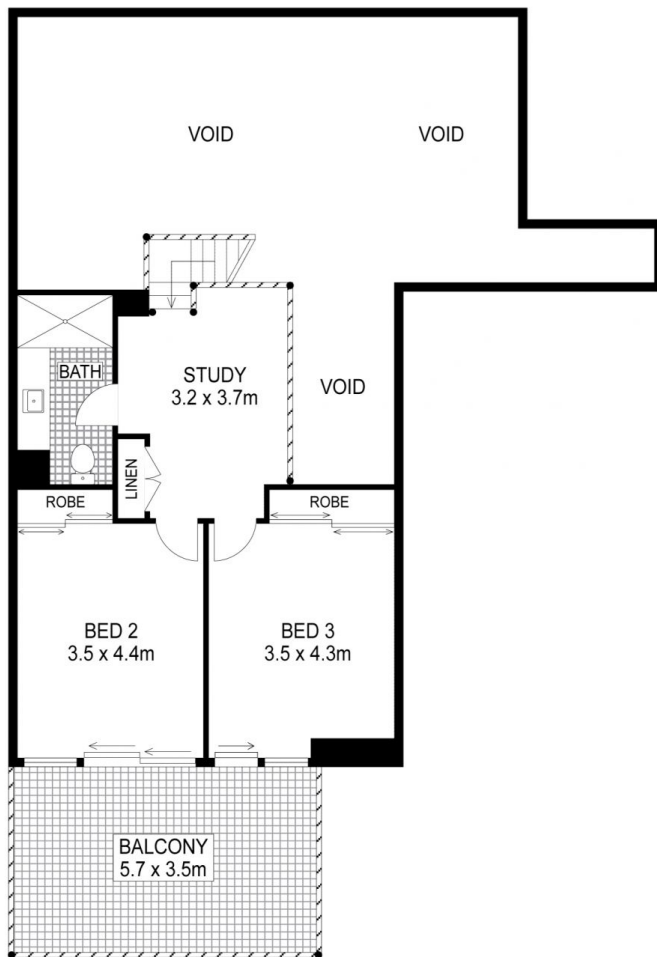
Type : Apartment
Building Size : 273 sqm
View : <https://www.cityliving.com.au/sale/nsw/sydney-city/walsh-bay/residential/apartment/7223392>



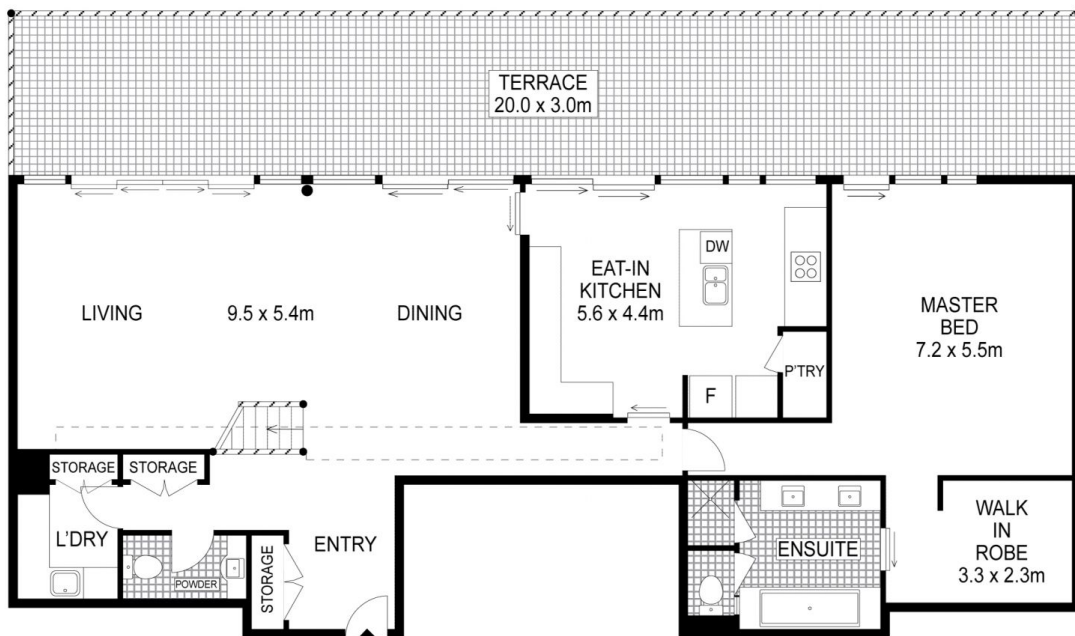
Tasman Fallshaw
02 8248 9104

[For full version visit the website](https://www.cityliving.com.au)

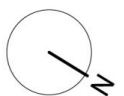
<https://www.cityliving.com.au>



**TOP FLOOR
UPPER LEVEL**



TOP FLOOR



0 1 2 3 4 5

Plans shown are for presentation purposes only and are not part of any legal document or title. They are subject to errors, omissions, inaccuracies and should not be used as a sole and accurate reference. Interested parties should make their own inquiries using independent sources.

605/19 Hickson Road, Walsh Bay