




# CITY LIVING



## 21/5 Towns Place Walsh Bay NSW

3  2  3 

Adjacent to Barangaroo Reserve and with an uninterrupted vista over the harbour and Goat Island to Balls Head Reserve, this light-filled three-bedroom apartment is part of the waterside village of Walsh Bay and is only a short stroll from Barangaroo, Circular Quay and The Rocks, as well as a plethora of restaurants, cafes and bars.

**Type** : Apartment  
**Building Size** : 157 sqm  
**Land Size** : 205 sqm  
**View** : <https://www.cityliving.com.au/sale/nsw/sydney-city/walsh-bay/residential/apartment/7223389>

### KEY FEATURES

The balconies - Bi-fold doors run the width of the living area and open onto a terrace which effortlessly increases the living space, while a second balcony can be accessed from two of the bedrooms

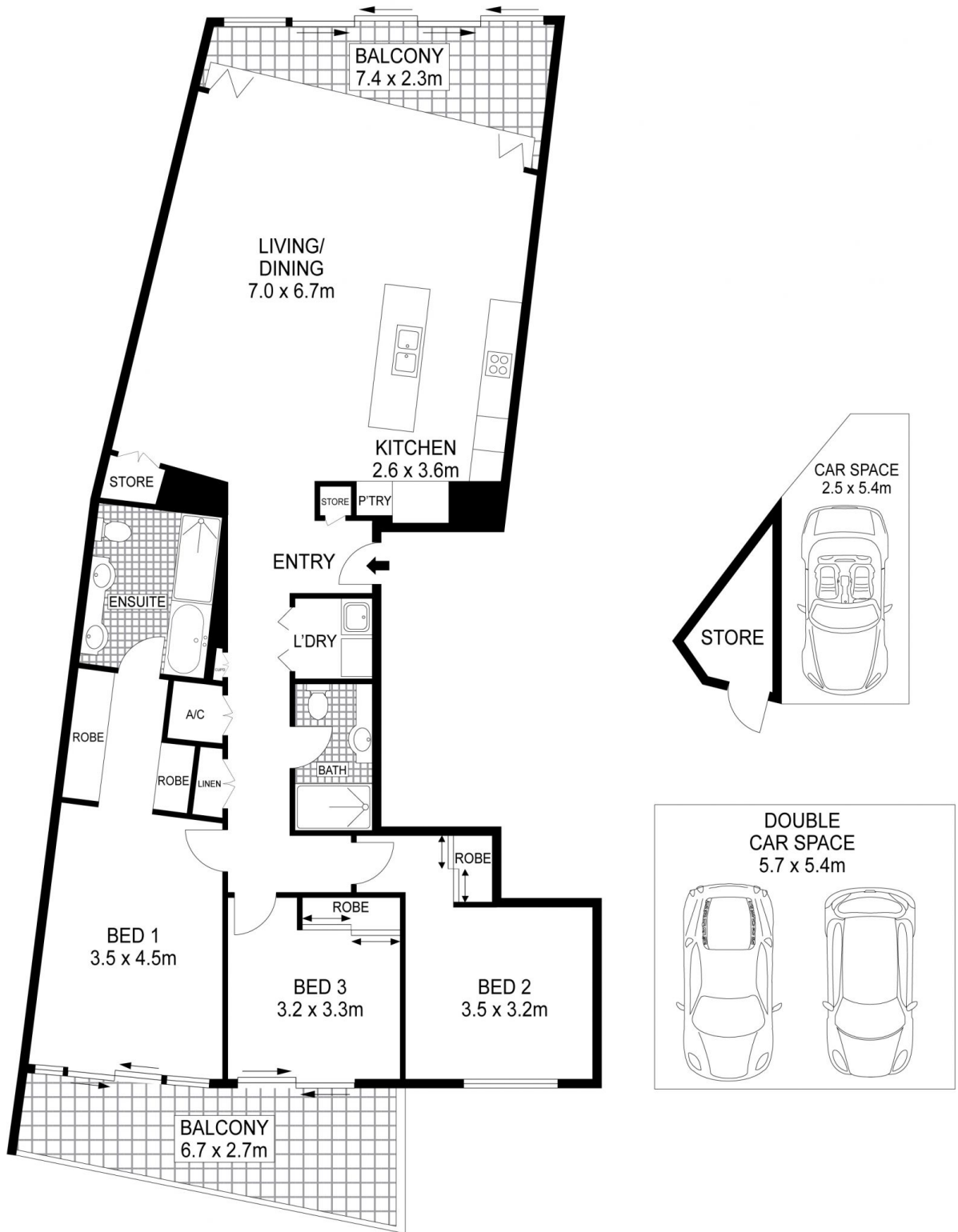
The layout - With the living area located at the opposite end

[For full version visit the website](https://www.cityliving.com.au)



**Tasman Fallshaw**  
02 8248 9104

<https://www.cityliving.com.au>



**LEVEL SIX**



Plans shown are for presentation purposes only and are not part of any legal document or title. They are subject to errors, omissions, inaccuracies and should not be used as a sole and accurate reference. Interested parties should make their own inquiries using independent sources.

21/5 Towns Place, Walsh Bay

