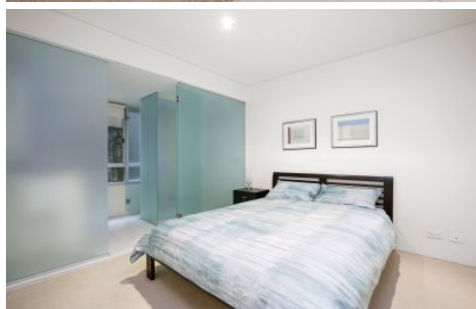


# CITY LIVING



## 4/22 Cliff Street Milsons Point NSW

2 3 1

Situated a stone's throw from Lavender Bay, in the boutique 'Delmont' development, the open plan living area opens seamlessly onto a terrace and with a glass balustrade this apartment delivers a leafy outlook over Clark Park to McMahon's Point.

### KEY FEATURES

The finish - This oversized 150 square metre apartment, uses white stone, frosted glass and stainless steel and has a contemporary finish that will effortlessly suit an array of furnishing styles

The layout - Each of the two-bedrooms has its own ensuite, while off the open plan living area there is a large study or

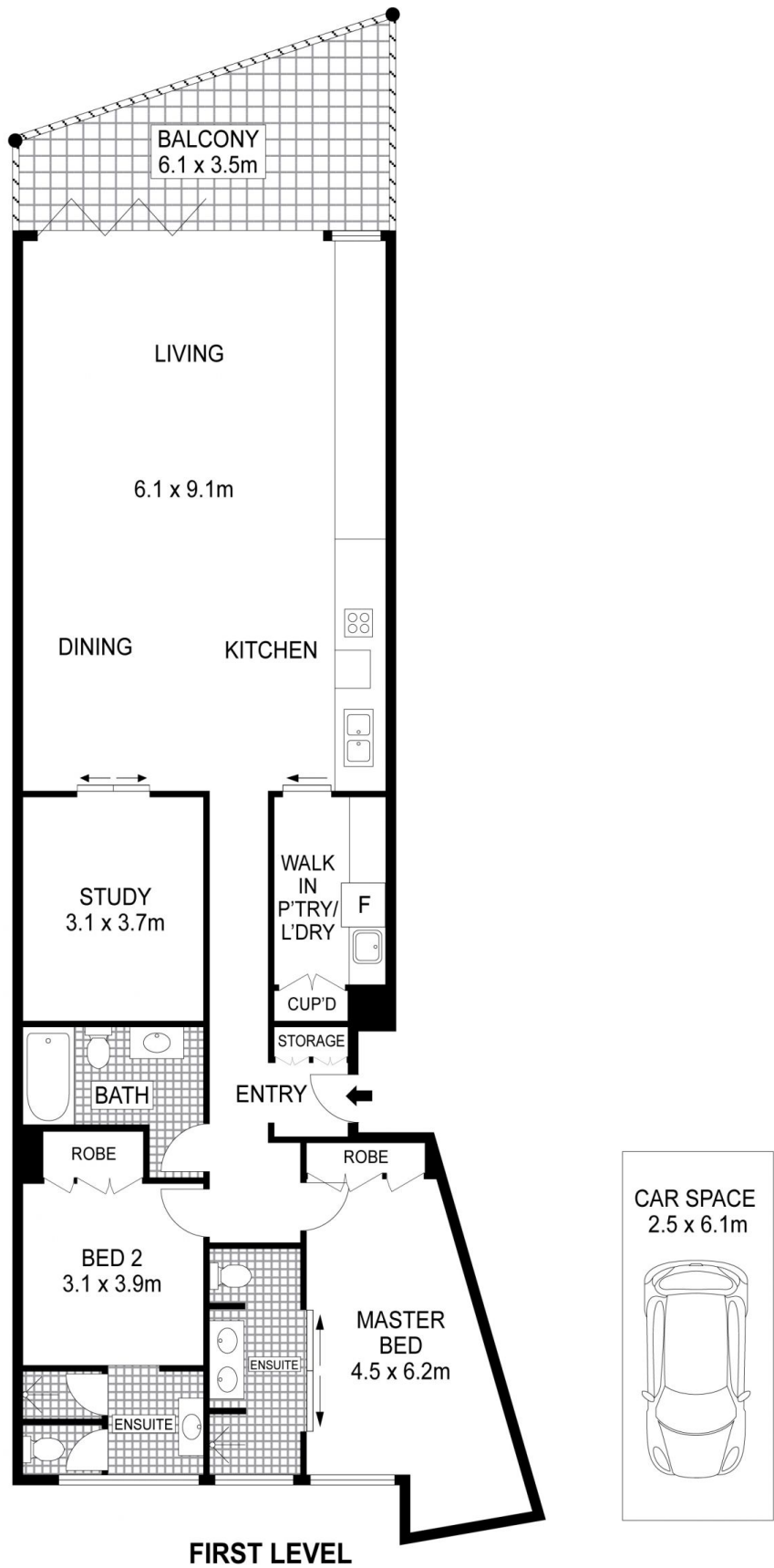
[For full version visit the website](https://www.cityliving.com.au)

**Type** : Apartment  
**Building Size** : 150 sqm  
**Land Size** : 164 sqm  
**View** : <https://www.cityliving.com.au/sale/nsw/north-shore-lower/milsons-point/residential/apartment/7223384>



**Tasman Fallshaw**  
02 8248 9104

<https://www.cityliving.com.au>



**FIRST LEVEL**



Plans shown are for presentation purposes only and are not part of any legal document or title. They are subject to errors, omissions, inaccuracies and should not be used as a sole and accurate reference. Interested parties should make their own inquiries using independent sources.

4/22 Cliff Street, Milsons Point

