

CITY LIVING



310/19 Hickson Road WALSH BAY NSW

2 2 1

Immaculately renovated, this two-bedroom apartment is situated above the eastern boardwalk on level three of Pier 6/7 and the layout lends itself perfectly to today's modern and convivial lifestyle, with an open plan living area and seamless indoor/outdoor flow.

KEY FEATURES

The privacy - Situated on a private pier with exclusive resident access, this apartment is ideal for people who value their privacy

The terrace - The terrace is accessible from both bedrooms, as well as the living area and is the ideal spot to enjoy a drink with friends with the water lapping below

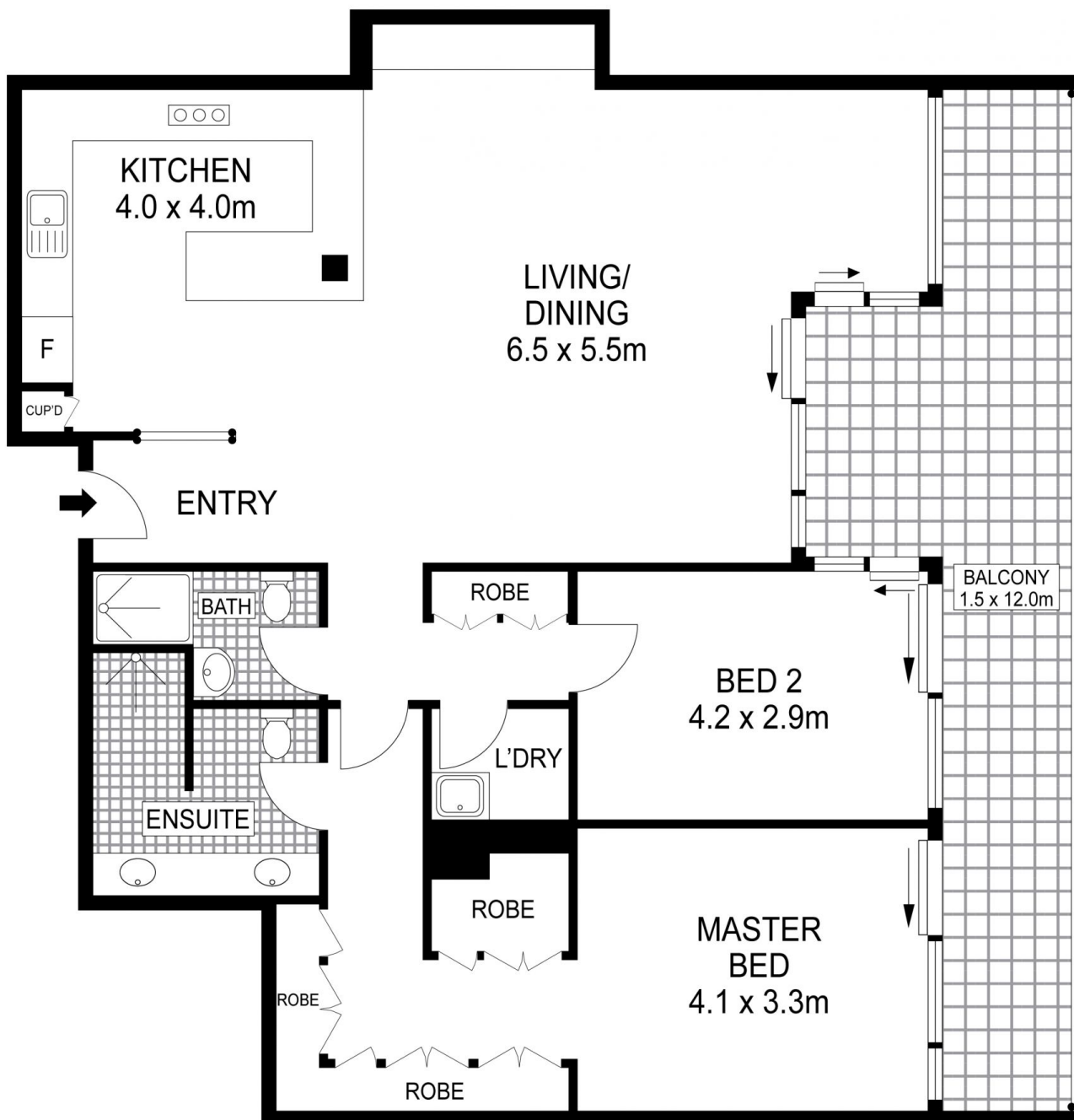
[For full version visit the website](https://www.cityliving.com.au)

Type : Apartment
Building Size : 14 sqm
View : <https://www.cityliving.com.au/sale/nsw/sydney-city/walsh-bay/residential/apartment/7223378>

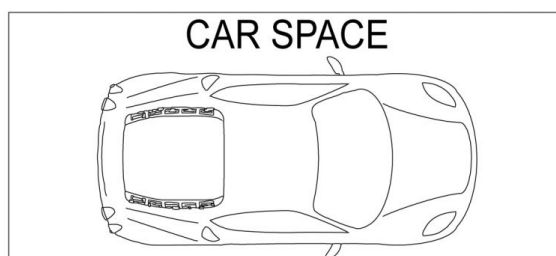


Tasman Fallshaw
02 8248 9104

<https://www.cityliving.com.au>



LEVEL THREE



Plans shown are for presentation purposes only and are not part of any legal document or title. They are subject to errors, omissions, inaccuracies and should not be used as a sole and accurate reference. Interested parties should make their own inquiries using independent sources.

310/19 Hickson Road, Walsh Bay