

CITY LIVING



1306/187 Liverpool Street SYDNEY NSW

2 2 1

The outlook from this apartment is one of the best in the city, with an uninterrupted vista over Sydney's most iconic landmarks, including Hyde Park, Saint Mary's Cathedral, Centrepont and the harbour in the distance. Move into one of Sydney's most popular and iconic developments and make it your own, or purchase as an investment property for a lucky tenant.

KEY FEATURES

The location - The restaurants on Stanley Street, boutiques on Oxford and David Jones Food Hall are all within walking distance of this perfectly situated city apartment

The terrace - Spanning the width of the apartment and

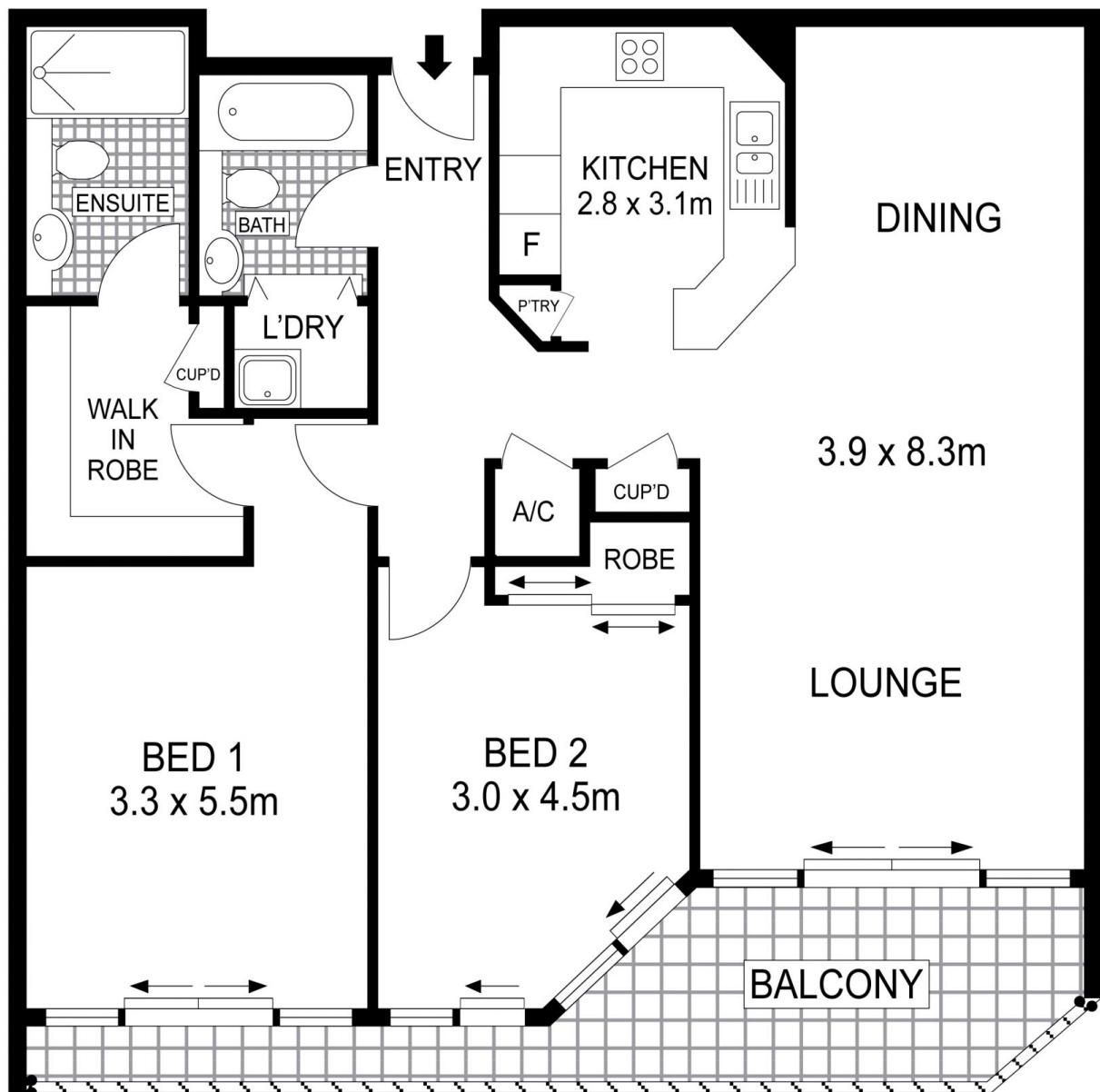
[For full version visit the website](https://www.cityliving.com.au)

Type : Apartment
Building Size : 11 sqm
View : <https://www.cityliving.com.au/sale/nsw/sydney-city/sydney/residential/apartment/7223377>

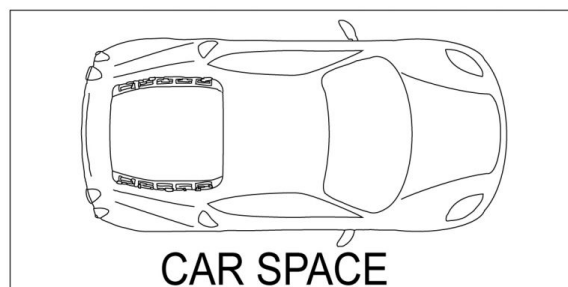


Tasman Fallshaw
02 8248 9104

<https://www.cityliving.com.au>



LEVEL THIRTEEN



Plans shown are for presentation purposes only and are not part of any legal document or title. They are subject to errors, omissions, inaccuracies and should not be used as a sole and accurate reference. Interested parties should make their own inquiries using independent sources.

1306/187 Liverpool Street, Sydney