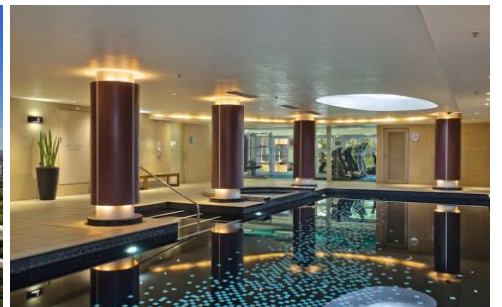
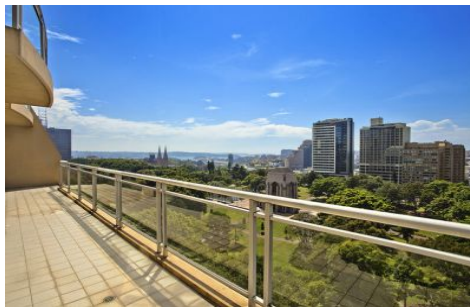
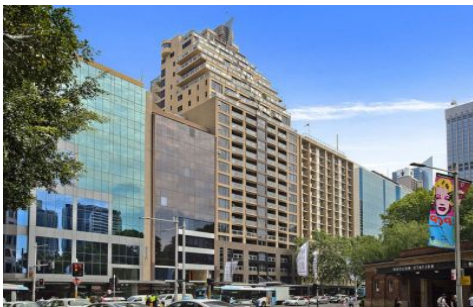





CITY LIVING



1602/281 Elizabeth Street SYDNEY NSW

3  3  2 

This spacious three-bedroom apartment is situated on level 16 of the Regency Hyde Park and offers a plethora of natural light delivering a sense of space and openness often lacking in city apartments.

View : <https://www.cityliving.com.au/sale/nsw/sydney-city/sydney/residential/apartment/7223361>

You will love:

The layout - The open-plan living area opens seamlessly onto the large terrace which runs the length of the apartment and offers residents a private space to laze about in the summer sun and enjoy the leafy outlook

The view - Overlooking Sydney's famed Hyde Park, this apartment has a vista that sweeps over the park and St Mary's Cathedral, to the harbour and beyond

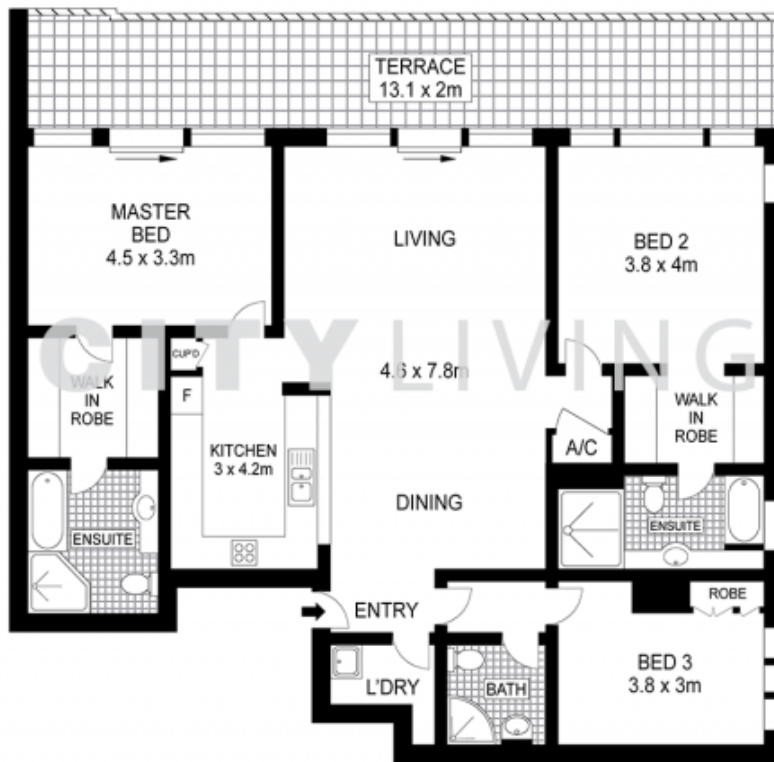
The ensuites - This apartment has two ensuites and both have baths, there is also a third bathroom for guests

The location - Being only a short stroll from Westfield, Pitt



Tasman Fallshaw
02 8248 9104

<https://www.cityliving.com.au>



SIXTEENTH FLOOR

0 1 2 3 4 5
Scale in metres. Indicative only. Dimensions are approximate.

