




# CITY LIVING



**502/187 Liverpool Street SYDNEY NSW**

2  2  1 

With an expansive and leafy vista over Hyde Park and the city skyline, this apartment delivers a sense of openness not found in many city apartments. Move in to one of Sydney's most popular and iconic developments and make it your own, or purchase as an investment property for a lucky tenant.

You will love:

The location - Westfield, the David Jones Food Hall, Oxford Street, along with a myriad of restaurants and bars are all within walking distance of this perfectly situated city apartment

The car space - Having a car space in the city is a luxury few apartments offer, but this apartment guarantees not

**Type** : Apartment

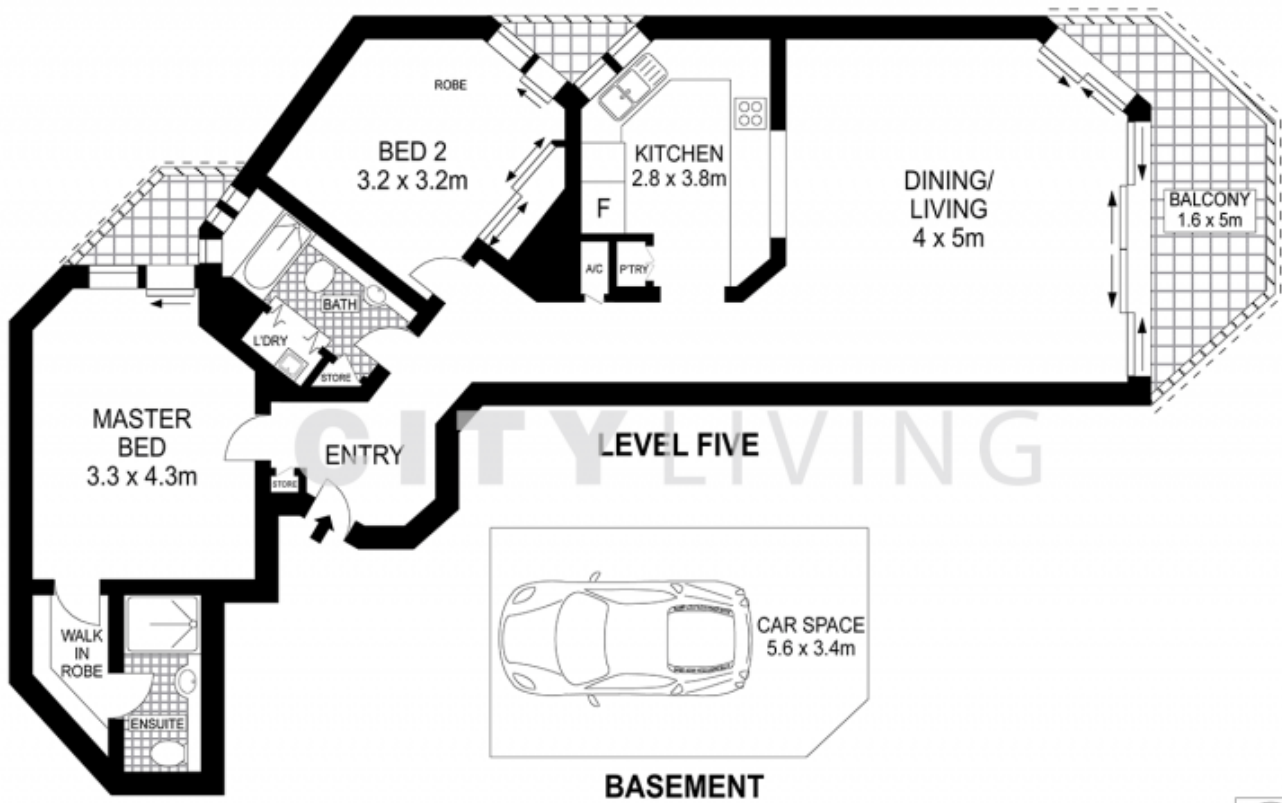
**View** : <https://www.cityliving.com.au/sale/nsw/sydney-city/sydney/residential/apartment/7223359>



**Tasman Fallshaw**  
**02 8248 9104**

[For full version visit the website](https://www.cityliving.com.au)

<https://www.cityliving.com.au>



0 1 2 3 4 5  
 Scale in metres. Indicative only. Dimensions are approximate.



502/187 Liverpool Street, Sydney