

CITY LIVING



5 Emerstan Drive CASTLE COVE NSW

5 🏠 3 🚿 4 🚗

This large family home is situated on the high-side of Emerstan Drive and offers an unmatched quality of life for families. With a strong sense of community and family, the Castle Cove Peninsula delivers all the advantages of a village, while being only a short drive to Chatswood, Castlecrag and Northbridge shopping centres.

Type : House
Land Size : 944 sqm
View : <https://www.cityliving.com.au/sale/nsw/north-shore-upper/castle-cove/residential/house/7223358>

You will love:

The parent's retreat - The oversized master bedroom features a walk-in robe, ensuite, and separate lounging area, as well as French doors that open onto a covered balcony with a picturesque view of Sugarloaf Bay; a true parent's retreat

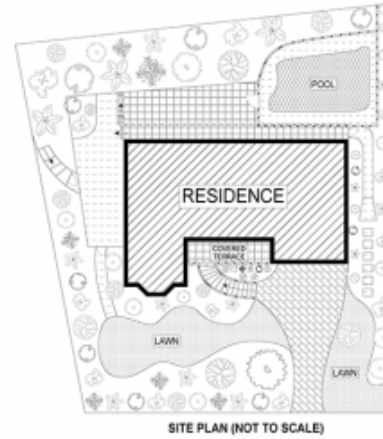
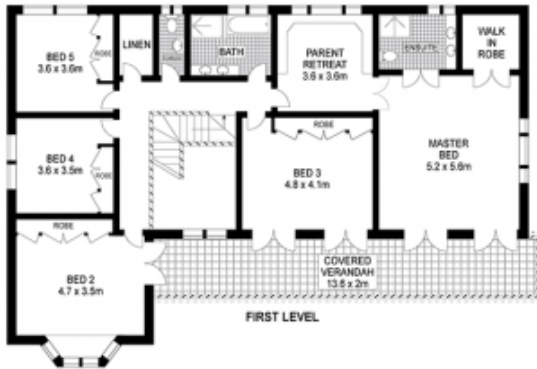
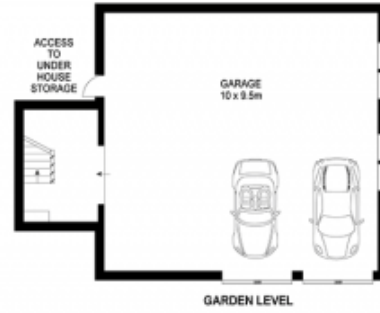
The space - This home offers not only generous



Tasman Fallshaw
02 8248 9104

[For full version visit the website](https://www.cityliving.com.au)

<https://www.cityliving.com.au>



0 3 6 9 12 15
 Scale in metres. Indicative only. Dimensions are approximate.



5 Emerstan Drive, Castle Cove