




CITY LIVING



2605/187 Liverpool Street SYDNEY NSW

3  2  2 

Location & views! - The outlook from this apartment is one of the best in the city, with an uninterrupted view over Hyde Park, Saint Mary's Cathedral, Centrepont and Sydney Harbour in the distance. Move into one of Sydney's most iconic developments and make it your own.

View : <https://www.cityliving.com.au/sale/nsw/sydney-city/sydney/residential/apartment/7223357>

You will love:

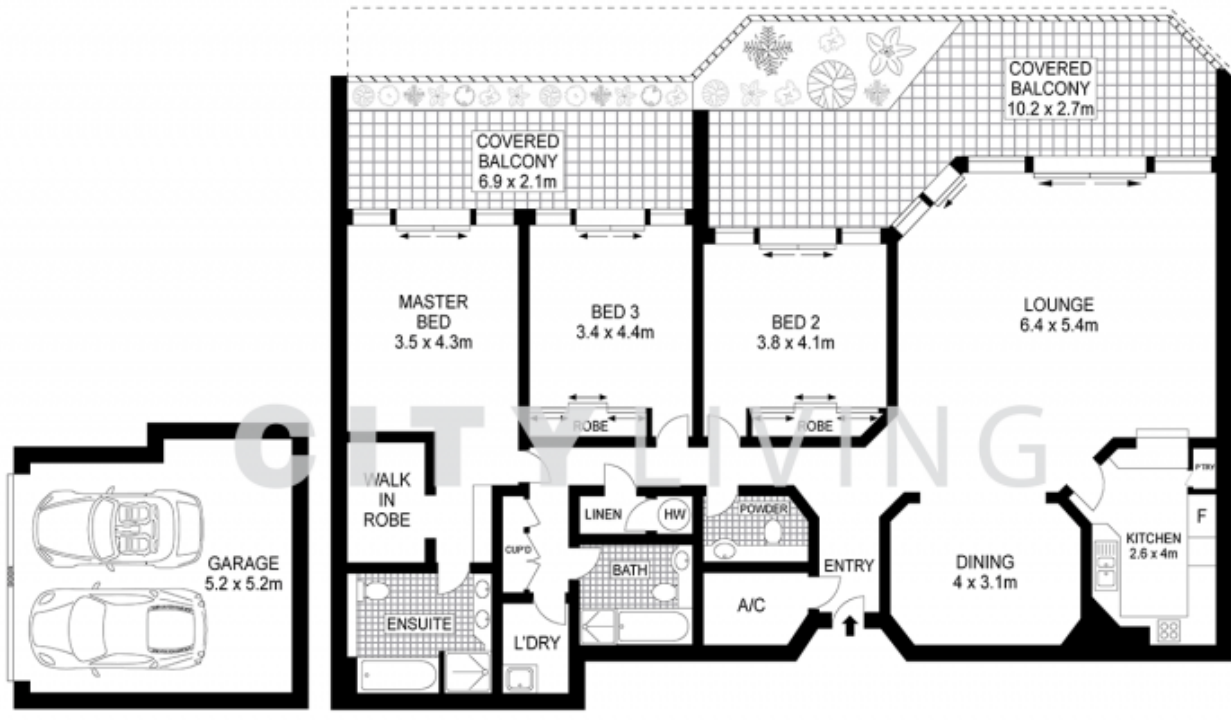
The terraces - Two separate north facing terraces creates a division between the living area and two-bedrooms, so residents are able to entertain without relinquishing any privacy

The outlook - With floor to ceiling windows, glass balustrades and an expansive vista, this apartment delivers a sense of openness that is a scarce commodity in the city
The building - The Connaught has a 24-hour concierge, gym, spa, sauna and roof-top pool, which is the star of the



Tasman Fallshaw
02 8248 9104

<https://www.cityliving.com.au>



BASEMENT LEVEL ONE

LEVEL TWENTY SIX



2605/187 Liverpool Street, Sydney