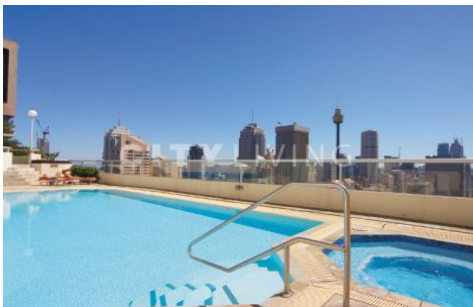


CITY LIVING



2203/187 Liverpool Street SYDNEY NSW

2 2 1

The outlook from this apartment will leave you lost for words with its breath-taking vista over Sydney's most iconic landmarks, including Hyde Park, Saint Mary's Cathedral, Centrepont and the Opera House.

Type : Apartment

View : <https://www.cityliving.com.au/sale/nsw/sydney-city/sydney/residential/apartment/7223349>

You will love:

The views - With only Hyde Park directly in front of your apartment, the view is uninterrupted, creating a sense of openness not found in many city apartments

The balcony - Running the width of the apartment and accessed from the living area and both bedrooms, the balcony allows residents to enjoy the stunning view while soaking up the pulse of the city

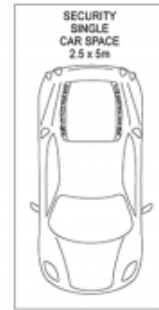
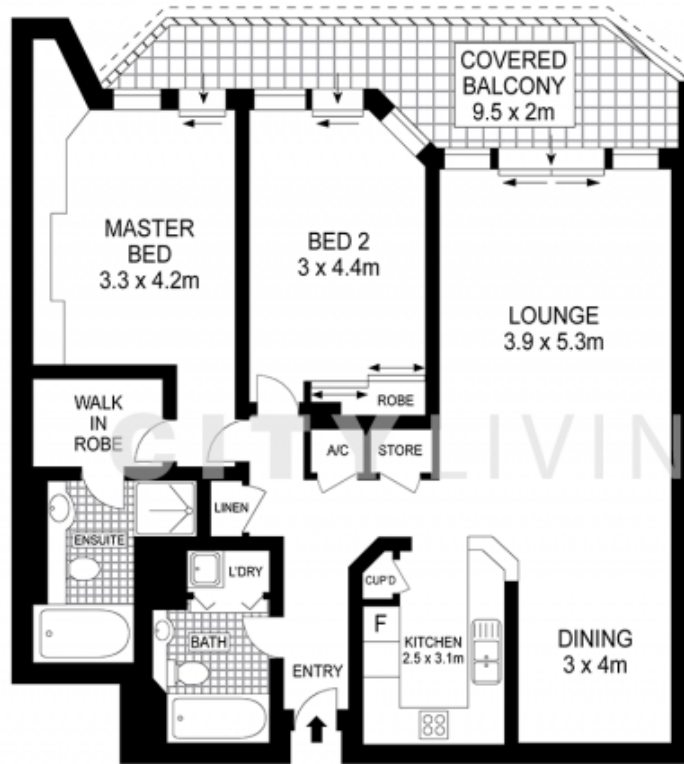
The building - The Connaught has a 24-hour concierge,



Tasman Fallshaw
02 8248 9104

[For full version visit the website](https://www.cityliving.com.au)

<https://www.cityliving.com.au>



BASEMENT



LEVEL TWENTY TWO



2203/187 Liverpool Street, Sydney