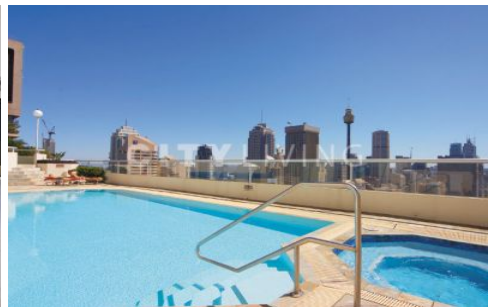


CITY LIVING



1804/187 Liverpool Street SYDNEY NSW

2 2 1

THE CONNAUGHT - Location & views, for you or a tenant!

The outlook from this apartment is one of the best in the city, with an uninterrupted vista over Sydney's most iconic landmarks, including Hyde Park, Saint Mary's Cathedral, Centrepont and the harbour in the distance. Move in to one of Sydney's most popular and iconic developments and make it your own, or purchase as an investment property for a lucky tenant.

You will love:

The view - The sense of openness this apartment delivers with its view over Hyde Park and beyond is not only spectacular but a rare feature in the city

Type : Apartment

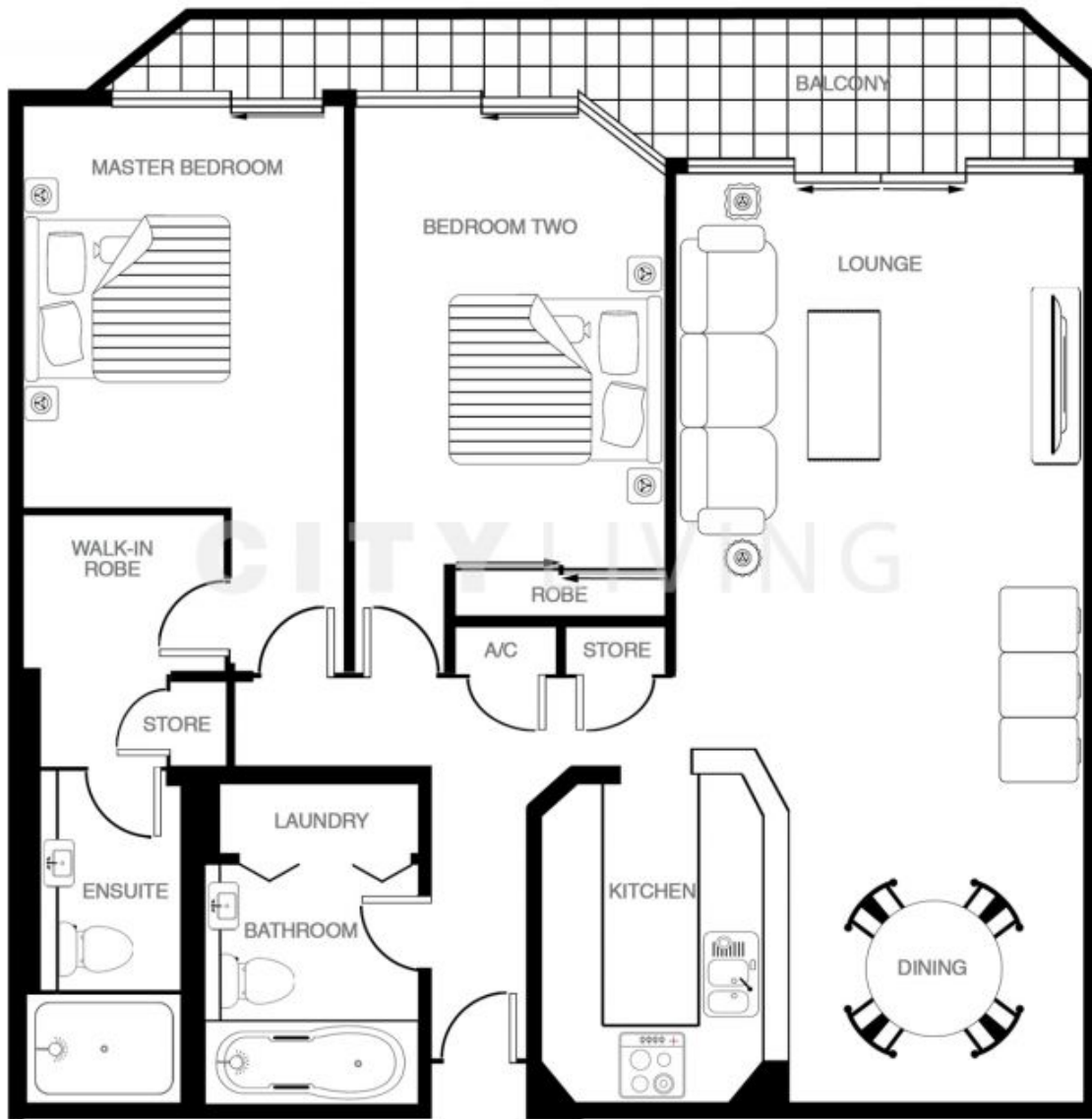
View : <https://www.cityliving.com.au/sale/nsw/sydney-city/sydney/residential/apartment/7223346>



Tasman Fallshaw
02 8248 9104

[For full version visit the website](https://www.cityliving.com.au)

<https://www.cityliving.com.au>



DISCLAIMER - "The information herein is believed to be correct, but is not guaranteed. All interested parties should rely on their own enquiries".