

# CITY LIVING



## 20 Pottinger Street SYDNEY NSW

3  4  2 

Set over four levels with its own lift, this terrace is a true city home with a scale and layout you will struggle to find anywhere else in Sydney city's 2000 postcode.

You will love:

The finish - Using only the best materials has created a contemporary home that is not only stylish, but also delivers a natural warmth and character

The flow-through - The open-plan design enjoys fresh ventilation, flowing naturally from north to south through one space to another

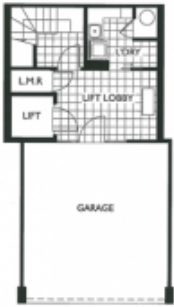
The outdoor areas - With three separate outdoor areas, situated over different levels, you can follow the sun throughout the day and enjoy outdoor options not found in

**Type** : Terrace

**View** : <https://www.cityliving.com.au/sale/nsw/sydney-city/sydney/residential/terrace/7223340>

[For full version visit the website](https://www.cityliving.com.au)

<https://www.cityliving.com.au>



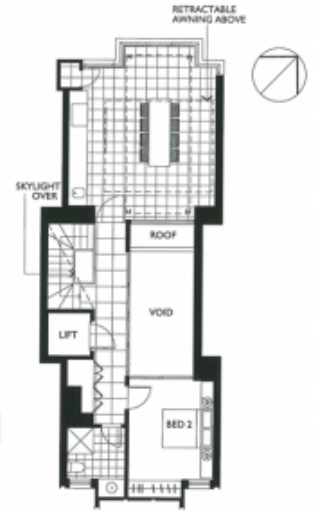
Basement Level



Ground Level



Level 1



Level 2